

Prime Connection

IQ 2020

PRIMUS

PRIMUS

The Difference in Wireless Distribution

Primus
4180 E Sand Ridge Rd.
Morris, IL 60450

Primus West
601 S 55th Avenue
Phoenix, AZ 85043

Quotes and Order Support
(800) 435-1636 tel (Morris, IL)
(480) 606-1520 tel (Phoenix, AZ)
(800) 767-7605 fax
support@primuselectronics.com

Office Hours
Monday - Friday
7 am - 6 pm

Pickup Hours
Monday - Friday
7 am - 8 pm

Connect with us



Proudly serving our customers since 1980.
Privately held and proud of it.
President – Michael A. Johnson



Trade Shows & Training

2020 TRADE SHOWS

Michigan Interop: February 11-14 in Traverse City, MI
NATE: February 17-20 in Raleigh, NC
IWCE: March 30 - April 3 in Las Vegas, NV
Entelec: April 7-9 in Houston, TX
RSSI: June 1-3 in Nashville, TN

TRAINING

Anritsu SiteMaster™ Certified Line Sweep Training 2-Day Course, \$1,395 pp
Anritsu PIM Master™ Certified PIM Training 1-Day Course, \$1,295 pp
CITCA Authorized Climber
CITCA Tower Rescue & Competent Climber
CITCA Train-the-Trainer
CommScope, ComStar, ODM Fiber, EXFO, Harger, Bird Technologies, JMA, and Kaelus Trainings available upon request.
Visit [primuselectronics.com](https://www.primuselectronics.com) or contact Training with Primus at (800) 435-1636 or training@primuselectronics.com for more information and registration.

ON EDGE ABOUT OUR 2020
T-SHIRT REVEAL?

Visit Primus at NATE!
Booth 702



STOP BY AND SEE WHAT
PRIMUS CAN DO FOR YOU!

Location

Raleigh Convention Center
500 South Salisbury Street
Raleigh, North Carolina

Exhibit Hall Hours

Tuesday, February 18
2-6 pm
Wednesday, February 16
1:30-6:30pm

To receive your new shirt, visit us during NATE February 17-20, 2020. You can also request a shirt by calling us at 800-435-1636 or visiting www.primuselectronics.com and ask to be put on the 2020 list.

NATE UNITE 2020 - Raleigh, North Carolina



Well, it only took 18 years of NATE to finally have the annual event in a city where I don't have to spend a night in a hotel; I get to go home and sleep in my bed during NATE 2020 in Raleigh – my new home town.

After 15 years of living surrounded by the flat corn and soy-bean fields of Central Illinois, I decided to trade that all in for the lush green oak-lined landscapes of Raleigh, North Carolina. In fact, Raleigh is called The City of Oaks.

Serving on the NATE Trade Show Committee for a period of time, I understand many of the prerequisites and wishes for the annual conference which comes around every February. The NATE Organization strives for securing a venue in a warmer geographic area (given the February backdrop), a favorable hotel room rate balanced in-line with providing a high-quality hotel and meeting and expo space that is adequate for enough vendors while providing the necessary classroom space for educational sessions.

There's also the desire for closeness of lodging to the actual venue (and in some cases, resorts have served as the conference setting), as well as providing opportunities of interest and enjoyment in the area around the conference.

After living here in the area now for over 18 months, I look back and can only say, "Huh" as to why our trade show committee group never gave Raleigh any real consideration until now. Though Raleigh has in fact, changed considerably in the 7-8 years since I last served with the committee group.

Today, the greater Raleigh-Durham-Research Triangle Park

(RTP) metro area is one of the fastest growing metros in the United States. Wake County alone (in which Raleigh sits), adds about 65 new residents per day, and recently the area was noted as the #2 ranked area for "tech jobs" right behind Austin, TX. The City of Raleigh itself transforms visually on a near-daily basis as it grows for an exciting and optimistic future. But, you're just coming here for perhaps 3-4 days to experience another educational NATE Conference, and maybe you are looking for some things to do during your down time, or perhaps, you reserved some extra time for either before or after the conference to explore the area.

Raleigh and the area have a lot of to offer. For starters, if you are a golfer, the famed and challenging golf courses of Pinehurst are less than a 90-minute drive from downtown Raleigh. Pinehurst easily qualifies as a "bucket list" destination for the avid golfer.

Explore the downtown area. Raleigh is rather compact! This is great for seeing a lot of interesting things in the city by foot, and in a short period of time. Interested in museums? Raleigh has a few very nice (and free admission) ones right downtown. The North Carolina Museum of Natural Science (11 W Jones St.) and The North Carolina Museum of History (5 E Edenton St.) are both immersive and worth a visit.

How about "Southern Cuisine"? Raleigh has you covered. Here's the names of a few of my favorites in the downtown area that are easy to get to - Beasley's Chicken + Honey (uhh... yum); Poole's (a Raleigh staple since 1945); Big Ed's City Market (breakfast and lunch); Lyla's Southern Kitchen (comfort food for your soul) and Rye Bar and Southern Kitchen. All great choices, and mid-week, much easier to get into.

How about a dining experience that is different and unique and also caters to the craft beer lover? Look no further than Brewery Bhavana (218 S Blount St.). This place is amazing. Yes, they make fantastic hand-crafted beers, and not just a handful – but a lot! But what makes BB stand out is what the "whole" of it is. This place is unique. It's a brewery tap room, it's a dim sum restaurant, it's a flower shop and... it's a bookstore. Oh, and it is beautiful inside. Was noted in 2018 as one of Forbes Magazine Top 10 Coolest Places to Eat on Earth. My own personal endorsement can't surpass that! Conde Nast Traveler also named it one of the 15 most beautiful breweries in the world. In. The. World. And that's including breweries in Belgium, France, Spain, Italy, etc.

Interested in more craft beer? How about The Raleigh Beer Garden (614 Glenwood Ave.) which holds the Guinness Book of Records title for most beers on tap (at any given time) with 366. The list is so extensive and often changing that there is no beer menu, but rather an app that can be downloaded on your phone, which is kept current with all the beers available. Oh, and the "back yard" view and upper floor outdoor deck offer excellent views of the city.

Looking for more craft beer? Raleigh has you covered, with these breweries also in or very close to the downtown area – Crank Arm Brewery, Little City Brewing + Provisions, Trophy Brewing & Taproom, and Burial Brewing Company out of Asheville, NC opened a tap room in one of the city's two amazing food halls.

Food Halls. Here's a great experience. Think mall food court but in a cool environment, and the food is way way better than food

court fast food quality. Interesting options abound, and the city has two fantastic food halls that opened within the past year. Morgan Street Food Hall (411 W Morgan St.) and Transfer Company Food Hall (500 E Davie St.).

Later into the evening there are bars and clubs a plenty in the downtown area, but one that I will bring attention to has a nostalgic place in my heart – Boxcar Bar & Arcade (330 W Davie St.). If you ever enjoyed video games, this place has it all going back into the early 1980's and forward. I don't know... there's just something funny about watching a 48-year-old man playing Dance Dance Revolution!

Primus looks forward to visiting with you when you come to NATE this year; we're looking forward to a good show, and excited about the great educational sessions that NATE continues to put together for the benefit of the industry year after year. And I, personally welcome you to my new hometown. Spend some time enjoying this wonderful city.

-Rob Menees
Vice President, Sales
Primus Electronics Corporation

NEW YEAR NEW PRIMUS!

Primus announces new look to website

PRIMUS

NOW OPEN

Come see our new site and value added catalog!

Visit our new and improved website!

Have the ability to place quotes online 24/7!

Re-ordering past quotes made easy!

Live chat support with a Primus Representative!

www.primuselectronics.com

Primus Electronics is elevating wireless distribution to the next level with with our brand new website. Meet our interactive value added catalog where you'll be able to find, research and request material with the click of a button, 24/7!

If there's an item you're not finding or if there's an issue you're experiencing, then let us know right away and it will be promptly addressed. Based on your feedback, we're continuing to grow and evolve daily to best serve you!



Handheld RF Spectrum Analyzers

The SignalHawk™ family of handheld spectrum analyzers combine best in class functionality in a compact, affordable package. Highly portable, the SignalHawk™ family of analyzers easily fit in one hand and boast an intuitive touchscreen user interface. RF Spectrum Analysis at Your Fingertips

- SH-60S-TC, RF Analyzer is the latest offering in the SignalHawk™ family of handheld RF spectrum analyzers, allowing users to view RF signals between 9 kHz and 6 GHz.
- SH-60S-AOA, RF Analyzer extends the capability of the SH-60S-TC by adding the ability to triangulate the location of an interferer on a map for signals between 9 kHz and 6 GHz



- SH-42S-TC, RF Analyzer offers a frequency range of 10 MHz to 4.2 GHz for users that don't have the higher frequency requirements of SH-60S-TC users.
- Leveraging multi-touch technology, users will find a high-resolution touchscreen with familiar, easy to use, methods for setting up and using the SignalHawk™ RF spectrum analyzer. Field engineers, technicians, wireless equipment manufacturers, service providers, contractors, tower erectors and military personnel alike have come to trust the precision results and efficiency of SignalHawk™.

Rugged Handheld Cable & Antenna Analyzers

Locate RF cable, connector & antenna problems at the source SiteHawk™ Cable and Antenna analyzers are the fastest, most cost-effective solution to quickly identify failing RF cables, connectors and antennas. The handheld testers offer measurements that include precision return loss vs. frequency, return loss vs. distance, voltage standing wave ratio (VSWR), cable loss and distance-to-fault (DTF) measurements.



SiteHawk™ analyzers help novice and expert users alike find problems before they become time-consuming, expensive repairs. The underlying engine of SiteHawk products is a simple 1-port network analyzer that delivers powerful features:

- Frequency range up to 6000 MHz
- Built-in cable data minimizes time required to perform a distance-to-

- fault test
- Testing RF antennas and cables at the frequency of operation provides a clear indication of performance
- Measuring slight changes in impedance will help uncover passive inter-modulation distortion and adjacent channel power problems for digitally modulated signals
- Test your system without shutting down other site transmitters
- Reliable measurements even in a very high ambient RF energy environment
- Transfer files wirelessly from the Bluetooth-enabled SiteHawk™ to other devices or laptops
- USB communication port for connection to storage device and battery charging
- Three Year Warranty

Advantages of Frequency Domain Reflectometry

- Frequency Domain Reflectometry (FDR) measurements are sensitive to RF problems and accurately identifies the return loss of the antenna
- Using Return Loss, identify problems, such as moisture collection or antennas damaged by lightning, at the top of the tower
- Fault location or DTF mode indicates VSWR or Return Loss levels at each point along the cable and antenna system length
- FDR technology is used to identify very small changes in RF impedance versus distance

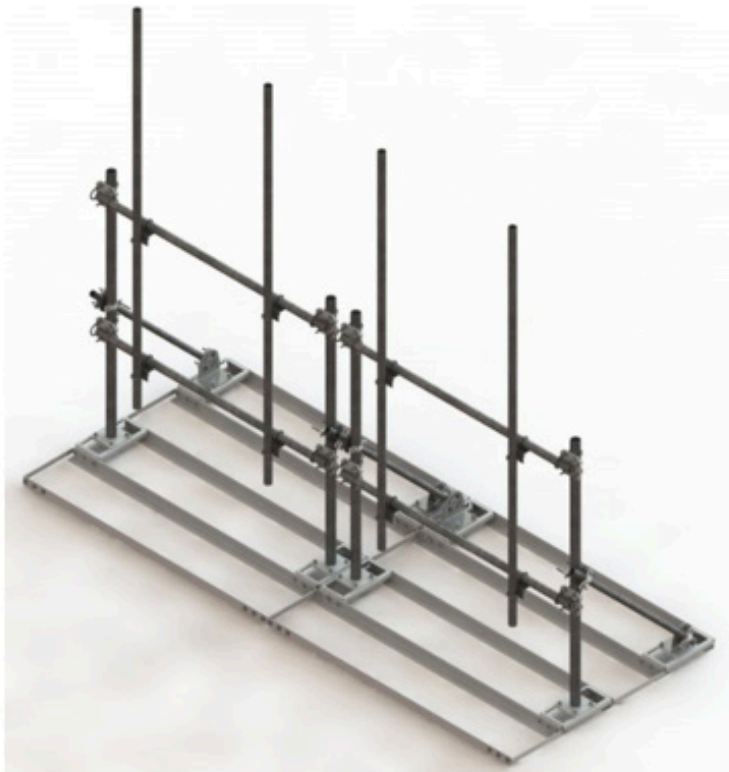
For more information please contact Pat Morgan at 800-435-1636 or email support@primuselectronics.com.

Commscope Heavy Duty Roof Top Sector Frames

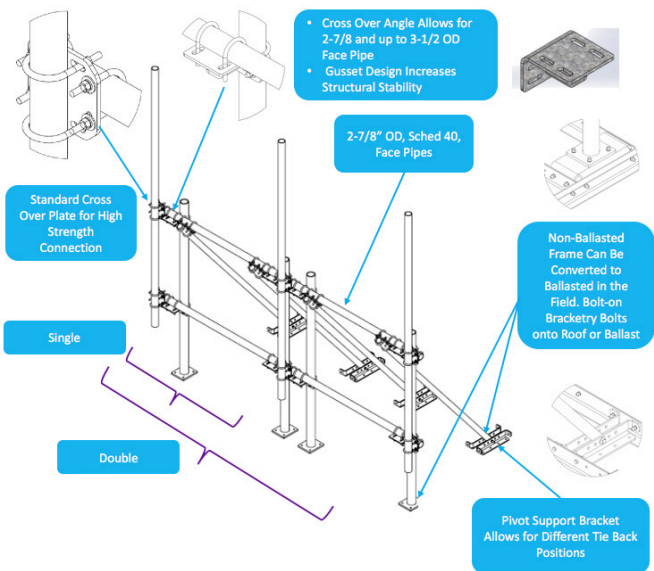
RT Series



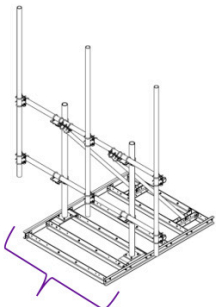
Non-Ballasted Sector Frame



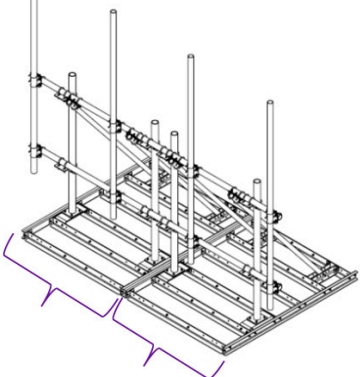
Ballasted Sector Frame



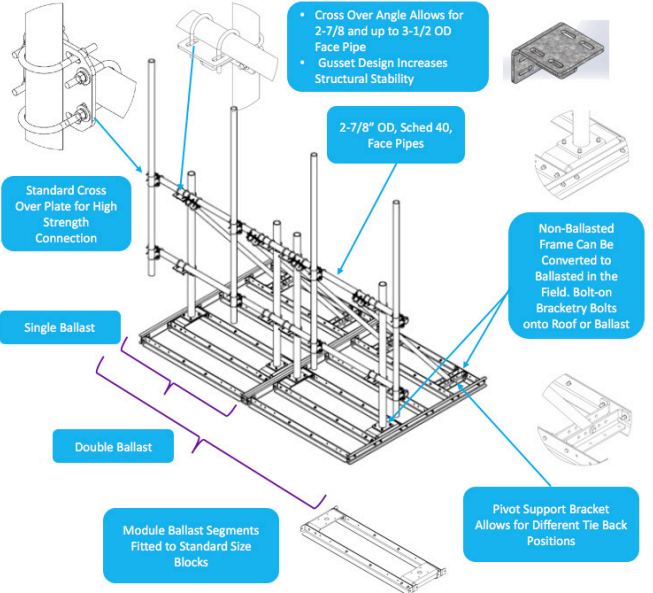
Single
• Sizes of 7 ft face, 10 ft face and 12 ft face



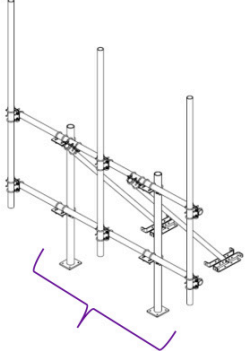
Dual
• Sizes of 12 ft face and 14 ft face



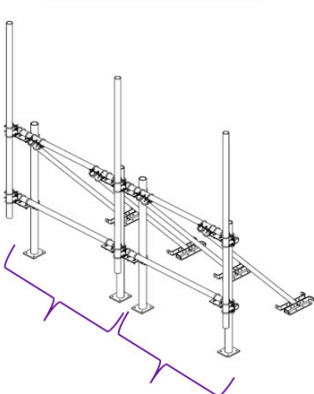
Single Section is Reproduced – Doubled Up – to Make 12 and 14 ft Face Options



Single
• Sizes of 7 ft face, 10 ft face and 12 ft face



Dual
• Sizes of 12 ft face and 14 ft face



Single Section is Reproduced – Doubled Up – to Make 12 and 14 ft Face Options

CommScope now offers a complete line of high capacity rooftop pipe sector frames designed for increased loading and lower EPA than traditional angle-based rooftop frames. The new RT-Series rooftop mounts are available in both penetrating and non-penetrating frame designs with multiple face size and pipe count options offered as a single part number to simplify ordering.

The RT-Series rooftop mounts all feature heavy duty 2 7/8" OD face pipes and antenna pipes and are rated to both AT&T and TIA-5053 standards with up to 5 antenna pipes (face width dependent). The frame features built-in mechanical adjustments for roof pitch with either single or dual frame versions to maximize load bearing capabilities.

- Features:
- Ballasted and Non-Ballasted Models
 - Rated for up to 5 Antennas
 - 7.5', 10.5', 12.5' and 14.5' Face Options
 - Dual and Single Frame Versions
 - Rated to AT&T and TIA-5053 Standards
 - Mechanical Adjustments for Roof Pitch
 - Heavy Duty 2 7/8" OD Face & Antenna Pipes

For more information contact Primus at 800-435-1636 or support@primuselectronics.com.

Westell

Cross Band Couplers | Public Safety VHF-UHF

General Description

Westell Cross Band Couplers provide for the combining of multiple frequency bands on shared cables and multi-band antennas.

This coupler is the perfect compliment to a multiband DAS solution combining multiple BDAs into a single passive DAS infrastructure.

Product Highlights

- Wide operating bandwidth
- Low Insertion Loss
- IP67 rated to handle direct water spray

Frequency Ranges

CS06-770-846

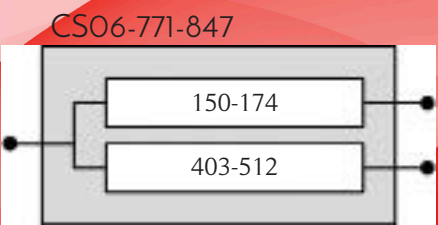
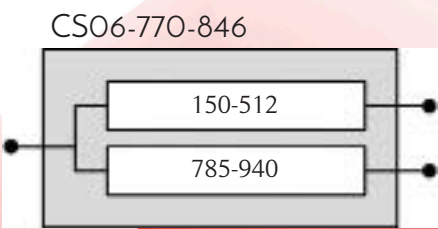
- Port 1: 150-512 MHz
- Port 2: 758-940 MHz

CS06-771-847

- Port 1: 150-174 MHz
- Port 2: 403-512 MHz



Block Diagrams



Electrical Specifications

VSWR	≤1.4:1
Input/Output Impedance	50 Ohm
Power Rating	20W Avg; 500W Peak
Insertion Loss	CS06-770-846: 0.5 dB @ 150-512 MHz 0.8 dB @ 758-940 MHz
	CS06-771-847: 0.5 dB @ 150-174 MHz 0.5 dB @ 403-512 MHz

Mechanical Specifications

Case Material	Aluminum
Installation Kits	Stainless Steel
Connectors	N-Female
Weather resistance	IP67
Color	Red 200C
Weight	3 lbs
Dimensions	2.72"x2.32"x1.02" (not incl. mntg hdwre)
Operating temperature	-20° C to +60 ° C
Storage Temperature	-40° C to +85 ° C
Relative Humidity	5% - 95%

- contributed by Westell and John Moe

PRIMUS

4180 E Sand Ridge Rd.
Morris, IL 60450

