

Prime Connection

1Q 2021

PRIMUS

PRIMUS

The Difference in Wireless Distribution

Primus
4180 E Sand Ridge Rd.
Morris, IL 60450

Primus West
601 S 55th Avenue
Phoenix, AZ 85043

Quotes and Order Support
(800) 435-1636 tel (Morris, IL)
(480) 606-1520 tel (Phoenix, AZ)
(800) 767-7605 fax
support@primuselectronics.com

Office Hours
Monday - Friday
7 am - 6 pm

Pickup Hours
Monday - Friday
7 am - 8 pm

Connect with us



Proudly serving our customers since 1980.
Privately held and proud of it.
President – Michael A. Johnson



Trade Shows & Training

2021 TRADE SHOWS

ENTELEC 2021 / August 10-12 / Houston, TX / Booth #420
IWCE 2021 / September 27-30 / Las Vegas, NV

TRAINING

Anritsu SiteMaster™ Certified Line Sweep Training 2-Day Course, \$1,395 pp
Anritsu PIM Master™ Certified PIM Training 1-Day Course, \$1,295 pp
CITCA Authorized Climber
CITCA Tower Rescue & Competent Climber
CITCA Train-the-Trainer
CommScope, ComStar, ODM Fiber, EXFO, Harger, Bird Technologies, JMA, and Kaelus Trainings
available upon request.
Visit [primuselectronics.com](https://www.primuselectronics.com) or contact Training with Primus at (800) 435-1636 or
training@primuselectronics.com for more information and registration.

PRIMUS

Primus remains open for business!

Our sales and customer service teams are here to process and/or expedite your orders. The staff operating Primus distribution centers in all locations remains fully operational while isolating according to the CDC’s guidance. Our website - www.primuselectronics.com - is fully functional accepting quotes, new accounts, and providing information on solutions at Primus.

- We have enabled all employees who are capable to work from home wherever possible.
- We have initiated proactive isolation measures for those on location.
- We have eliminated all travel until conditions warrant other wise.
- We have eliminated non-essential visits to our locations.

Everyone at Primus hopes that your friends and families are staying safe and healthy during these trying times and hope to fulfill all of your product needs.

Please contact Primus at 800-435-1636 or at support@primuselectronics.com with any questions.

ICT - THE POWER OF RELIABILITY

INTELLICHARGE

The IntelliCharge series is a CE certified, high-efficiency DC power supply with universal AC input and power factor correction. The IntelliCharge series is integrated with a 3-stage battery charger running alongside an internal low voltage disconnect charge to provide a reliable, cost-effective solution for smaller sites while safeguarding the battery backup capability. The DC outputs are regulated independently from the battery charging to ensure the backup battery will always receive the optimal charging current without disrupting the load.

- 180 or 360 watt models to meet the requirements of small base station applications
- Form C alarm contacts provide remote monitoring and alarms
- Optional front panel charging indicator and high-resolution OLED display
- Temperature compensated charging with optional battery temperature sensor
- Ideal for cabinet or rack mounting
- Available with 12, 24 or 48 volt DC output
- 2-year warranty included



COMM SERIES

The Comm Series line of desktop DC power supplies builds on a legacy of high reliability that is backed by industry leading availability, service and support. Newly provided with a 20A model, the Comm Series includes integrated battery charging posts to allow for a cost-effective DC UPS solution with available connections for an added-on UPS backup battery. The Comm Series is designed and manufactured in North America to be highly reliable and practical - presenting itself in a new, compact form factor that allows for a broad range of added radio covers.

- High reliability in the switch-mode design
- Extremely quiet output with FCC Class B certification
- Isolated outputs are compatible with negative or positive ground equipment
- Rugged terminal block connectors allows for trouble-free wiring connections
- Choice between models for a 12 or 24 volt DC output
- 2-year warranty included



BACKUP SERIES

The Backup Series is a DC power supply designed to run your land mobile radio equipment while integrating an additional backup battery that can provide several hours of back up run-time for your critical land mobile radios, should AC power go out. In a convenient desktop size, installation is easy for all devices, with the only requirement of plugging your devices in with no additional setup requirements. Once the devices are powered, the UPS backup battery fully charges to standby in order to provide uninterrupted power transfer for your mission critical land mobile radios when AC power fails.

- Integrated 14.4Ah hour battery provides several hours of backup run-time depending on your radio model and usage
- Zero transfer time to UPS when AC power fails
- Comes with protective 20A user-accessible fuse and AC power cord
- Power supply is CSA and FCC Class B approved
- 2-year warranty included



DC UPS Series 2

The ICT DC UPS Series 2 is an integrated backup solution that provides a complete, easy to install solution for providing uninterruptible power to mission critical base station radios. This device combines a backup battery, the IntelliCharge Series power supply, low voltage disconnect and enclosure, all pre-assembled into one integrated solution to provide up to 8 hours of backup run time should AC power fail. The DC UPS Series 2 features an instant transfer when AC power fails to ensure no communication channels are lost. The integrated low voltage disconnect protects the battery from over-discharge to ensure optimal battery performance over time.

- Universal power factor corrected 100-265 volts AC input... works anywhere in the world
- LED status indicators on front panel
- 14.4Ah internal sealed lead acid battery
- External battery protection fuse
- Built in low voltage disconnect protects battery from over-discharging
- Zero transfer time when AC fails means load is never disrupted
- Optional high-resolution OLED display available for voltage, current, charge rate, etc.
- 2-year warranty (1 year on battery) included



For more information contact a Primus Sales Representative at 800-435-1636 or support@primuselectronics.com.

RFI Technology Solutions. Your Proven Partner.

What's new at RFI Americas?

RFI is continuously adding and enhancing its portfolio of solutions. This is just a snapshot of what's new at RFI Americas in 2021.

Corporate Collinear Range

Our Corporate range continues to grow, with the addition CC807-12 - 11.5 dBd gain and the downtilt variations. We have also introduced new downtilt variations for the CC807-8 series. Here's a snapshot of our current range:

Model Number	Gain (dBd)	Frequency (MHz)	Downtilt (Degrees)
CC380-06	6	380-420	0
CC380-33	3 x 3	380-420	
CC450-06	6	450-520	0,3,6
CC450-09	8.5	450-520	0,3,6
CC807-12	11.5	746-870	0,2,4
CC807-11	10.5		0,1,2,3,4,5
CC807-09	9		
CC807-08	8		
CC807-06	6		0,3,5
CC807-03	3		0

Control Station Antennas

Our wideband COD series antennas are perfect for control station applications, offering wide bandwidth.

For VHF applications, RFI has also released our wideband VHF monocone antennas. Here's a snapshot of the two ranges:

Model Number	Gain	Frequency (MHz)	Polarization	Power	Beamwidth
COD8-7687	Unity	760-870	Vertical	100W	70° E plane
COD8-8595		850-960			83° E plane
COD4-3847		380-470			
COD4-4552		450-520			
BMV-118137	Unity	118-137	Vertical	200W	90° E plane
BMV-135160		136-160			
BMV-148174		148-174			

Panel Antennas

Introducing our range of panel antenna solutions to suit UHF and 700/800/900 MHz frequency bands. The panel antenna range offers the following key features:



PIM and PIP rated



A range of panel solutions covering UHF, 700/800/900 MHz with full band operation



Both adjustable Mechanical and Manual Electrical Tilt (MET) available



High gain sectorized coverage

For more information contact a Primus Sales Representative at 800-435-1636 or support@primuselectronics.com



Hascall-Denke Handheld Radio Antenna

Hascall-Denke offers extended range portable radio antennas for Kenwood (NX210) and Icom (F3400) radios. These omni antennas provide ~3 dBi increase in gain compared to the standard stock antennas. Suitable for the rugged deployment, this antenna can operate in 3 different positions.

Part Numbers:

1Y46150 (MPMP160-161) for the Kenwood (NX-210)

1Y46150A (MPMP160-161AB) for the Icom (F3400)

Extended
Provides ~3dBi increase in gain compared to the stock antenna

Folded Above Blue Marker
Provides equivalent gain to the stock antenna

Folded Above Antenna Base
Suitable for short range communications.

Features

- Foldable Radiator
- Operates in folded position
- Extends range
- Robust construction

Electrical Specifications

Frequency	160-161MHz
Polarization	Vertical
Impedance	50 Ω Nominal
VSWR	< 2:1
Gain	See description next to pictures
Radiation Pattern	Azimuth 360°
Power	10 Watts
Connector	SMA Female

Mechanical Specifications

Design	Monopole
Height	20.5 in. (0.53 m)
Mount	SMA Female
Color	Black

**All information on this product and the product itself is the property of and is proprietary to Hascall-Denke.
**Specifications are subject to change without prior notice.

Extended
Provides ~3dBi increase in gain compared to the stock antenna

Folded Above Blue Marker
Provides equivalent gain to the stock antenna

Folded Above Antenna Base
Suitable for short range communications.

Features

- Foldable Radiator
- Operates in folded position
- Extends range
- Robust construction

Electrical Specifications

Frequency	160-161MHz
Polarization	Vertical
Impedance	50 Ω Nominal
VSWR	< 2:1
Gain	See description next to pictures
Radiation Pattern	Azimuth 360°
Power	10 Watts
Connector	SMA Female

Mechanical Specifications

Design	Monopole
Height	20.5 in. (0.53 m)
Mount	SMA Female
Color	Black

**All information on this product and the product itself is the property of and is proprietary to Hascall-Denke.
**Specifications are subject to change without prior notice.

To answer any questions please contact Primus at support@primuselectronics.com.

- Contributed by Pat Morgan

The U.S. rip and replace program

Who makes your network equipment is as important as its performance

The Secure and Trusted Communications Networks Act of 2019 (H.R. 4998) calls for the removal and replacement of network equipment supplied from companies deemed to present a national security risk. A rip and replace of your existing network can be disruptive and costly. CommScope helps make the transition quick, easy, and cost-effective.

Add reliable performance and faster deployment with CommScope

As a U.S. company with global reach, CommScope provides fast local distribution and breadth of solutions to improve your network's performance and accelerate deployment while lowering total cost of ownership. Now, one trusted source can provide all your macro cell needs: base station antennas, end-to-end RF path components, fiber-to-the-antenna (FTTA) connectivity, microwave backhaul, power delivery solutions and structural supports.

CommScope gives you the flexibility to support any U.S. licensed band. With state-of-the-art testing and an industry-leading warranty program, we deliver quality and reliability you can count on.

Base station antennas

Our 12-port, FFV4, multiband antennas are the perfect replacements for your existing antennas. Now you can support all U.S. licensed FDD bands in a 20-inch wide radome, while delivering excellent performance for rural coverage. Visit us online for additional antenna options.

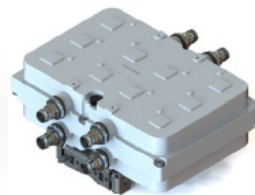


- Supports 600/700/850 + AWS/PCS/WCS/2600 bands
- 4 low-band ports and 8 mid-band ports for greater flexibility
- 4, 6, and 8-foot lengths available
- Every antenna is 100% factory tested for return loss, isolation and PIM for reliable, trouble-free performance

Interference mitigation filters (IMF)

CommScope's interference mitigation filters use proprietary technology that effectively suppresses interfering bands while passing all desired bands and information. IMF solutions can be deployed as standalone filters or integrated into tower mounted amplifiers (TMAs) and multiband combiners.

- Extensive portfolio and fully-customizable solutions for all applications
- Compact and lightweight for reduced tower loading and lease costs
- Industry-leading IMF technology



Ultra-compact multiband combiners

Our ultra-compact multiband combiners can help you increase cell capacity while significantly decreasing space requirements and deployment time.

They help your growing network adapt and evolve, easily and seamlessly, to the changing wireless environment.

- Up to 60 percent smaller than traditional combiners
- Lighter weight for easier installation in tight spaces
- Designed to support LTE bands and provide seamless migration to 5G

Connectivity and power solutions



From fiber and power cables, RF jumpers and connectors, to junction boxes, CommScope's HELIAX® connectivity portfolio covers all your RF path and fiber-to-the-antenna (FTTA) architectures. All solutions are engineered and rigorously tested to ensure fast and flexible deployment with superior reliability and PIM protection.

- D-CLASS PIM-rated jumpers and super-flexible cabling
- 4.3-10 and smaller coaxial connectors for improved PIM performance
- SureGuard® weatherproofing boots and PIM-guard accessories
- FTTA solutions for any site architecture



High-power delivery

PowerShift®—the industry's first intelligent, dc power supply—regulates voltage at the RRU or remote, eliminating the need for a tower-top converter. Besides lowering CapEx and installation time, it extends backup battery runtimes, enabling RRUs to operate up to 50 percent longer during a power outage.



- PowerShift 1460: One rack unit module supports up to 12 circuits.
- PowerShift 2000R: Optimized for 12-RRU sites, delivering 2 kW per circuit output.
- PowerShift 2000FA: Front access connections for 12-RRU sites, delivering 2 kW per circuit output.

Microwave backhaul solutions



CommScope's single and dual-band microwave backhaul antennas support long and short haul applications and frequencies from 4.4 GHz to 80 GHz (E-Band). Whether

you need farther reach or backup for your short haul, a low wind-load antenna for your long haul, or a kit that strengthens your microwave antenna's ability to withstand higher wind speeds, we have what you need. For added flexibility, our OEM-integrated antennas are modular—making it easy to swap radios in the field using a compatible radio interface kit available from the OEM.

- Microwave and mmWave in one antenna with flexible configurations
- LX6 low wind-load antennas available in 6, 7, and 11 GHz
- Field-installable high-wind kits increase survivability up to 155 mph (250 km/h)

Structural supports and accessories

CommScope designs and engineers support systems and accessories for virtually any microwave or base station antenna structure, tower or monopole. Tested to meet or exceed the latest EIA/TIA requirements, they help ensure stable antenna alignment, RF path integrity, reduced customer churn and a lower total cost of ownership.

- Antenna mounts designed, engineered and tested for virtually any pole, structure and orientation
- Full line of accessories: pipes and angles, clamp sets, cable supports, hardware and more
- Configurable equipment platforms, canopies and kits

Rely on CommScope

At CommScope, the breadth and quality of our mobile network solutions are matched only by our commitment to our customers. Making good on that promise requires superior engineering, constant testing and a comprehensive warranty program that's consistently rated one of the best in the business.

For over 40 years, CommScope has been the industry leader in wired/ wireless network infrastructure. As you continue to address the challenges of an ever-changing mobile landscape, rely on our strength and experience.

A rip and replace is rarely a first option. But, with CommScope, you can do it faster and easier while improving your network performance and speed of deployment.

For more information contact one of our Primus sales representatives at support@primuselectronics.com. Or view our CommScope products online [HERE](#).

PRIMUS

4180 E Sand Ridge Rd.
Morris, IL 60450