

Prime Connection

4Q 2023



P4/ PRIMUS
- UCT Region 5 Conference 2023

P6 / PCTEL
- ALL IN ONE EDGE SENSOR / SMART-DISC MIMO COMBINATION ANTENNA

P8 / MOBILE MARK ANTENNA SOLUTIONS
- SURFACE MOUNT MIMO ANTENNA

P9 / CITCA
- AVAILABLE TRAININGS

PRIMUS

The Difference in Wireless Distribution

Primus
4180 E Sand Ridge Rd.
Morris, IL 60450

Quotes and Order Support
(800) 435-1636 tel
(800) 767-7605 fax
support@primuselectronics.com

Office Hours
Monday - Friday
7 am - 6 pm

Pickup Hours
Monday - Friday
7 am - 6 pm

Connect with us

[f](#) [in](#) [twitter](#)

Proudly serving our customers since 1980.
Privately held and proud of it.
President – Michael A. Johnson



Trade Shows & Training

TRADE SHOWS

NATE - February 19-22 - Memphis, TN - Booth 604
IWCE - March 25-28 - Orlando, FL - Booth 541

TRAINING

Anritsu SiteMaster™ Certified Line Sweep Training 2-Day Course, \$1,395 pp
Anritsu PIM Master™ Certified PIM Training 1-Day Course, \$1,395 pp
CITCA Authorized Climber
CITCA Tower Rescue & Competent Climber
CITCA Train-the-Trainer
CommScope, ComStar, ODM Fiber, EXFO, Harger, Bird Technologies, JMA, and Kaelus Trainings available upon request.
Visit primuselectronics.com or contact Training with Primus at (800) 435-1636 or training@primuselectronics.com for more information and registration.

Prime Connection is published as a corporate communications magazine for customers and friends of Primus. The magazine is published by the Primus Marketing Department at 4180 E Sand Ridge Road in Morris, IL. To receive an email notification stating the release of the next newsletter, please email marketingdept@primuselectronics.com or call (815) 267-7402.

E/M Wave GPS/GLNSS (L1) Timing Antenna



EM-BGT13005-TJ
1575-1610 MHz

Advantages & Features

- Impact Resistant ASA Radome
- Integrated Bulkhead, TNC Jack
- Rugged Die-Cast Aluminum Base
- High Selectivity Dual Filter RF Architecture Eliminates High Power RFI Operating within Multi-Located Base Station Environment



Optional Mounting Kit available

EM-BGT13006-TJ

PRIMUS

For pricing and availability
please contact (800) 435-1636
or sales@primuselectronics.com

SUBSCRIBE TO PRIMUS

Click [HERE](#) to receive email updates from Primus and to make sure you don't miss a quarterly newsletter! We do our best to make it easy to learn about the latest developments and industry trends!

UTC Region 5 Conference 2023



This years conference was held in Duluth MN October 17-18th. Primus was proud to exhibit and support UTC. Representing Primus was Sharon McDonald, Territory Manager.

Our highlight was to promote product solutions and support to the customers in the utility market space. Topics of discussion centered around new technologies, wireless network expansions, upcoming 2024 microwave projects and day to day business needs.

The evening networking event with customers and vendors was held at the historic Glensheen Mansion known for its preserved ornate rooms and expansive grounds along Lake Superior.

Perfect venue for customers and vendors to connect about the possibilities of the future while immersed in the accomplishments of the past.

Thank you everyone, it was a great pleasure to visit with friends as well as make new connections as you stopped by to visit. We look forward to seeing you all next year in Minneapolis!

Contributed by - Sharon McDonald

NexTek

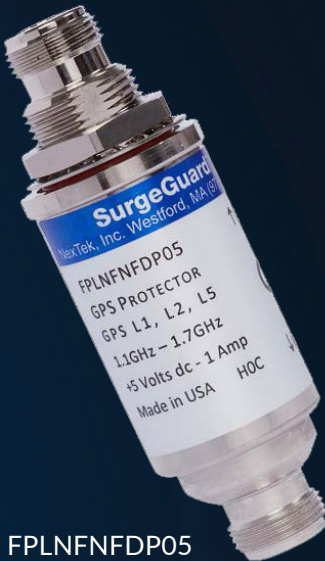
Protection for the *NEXT* Generation™

FPL-Series Lightning Arrestors 1100 - 1700 MHz

The FPL Series is our flagship series of GPS/GNSS surge arrestors. These fast-response arrestors are designed to protect especially sensitive equipment, such as GPS receivers. All our FPL-Series GPS arrestors operate within the L-Band from 1100 - 1700 MHz. Available with various connector options, connector genders, and operating voltages.

Features:

- RF Power: 5 Wcw
- Maximum Transient (Imax): 30kA (1x)
- Multiple Strike (IN): 20 kA (10x)
- Rugged and Waterproof - IP68 Rated when Mated
- Very Low Let-Through Voltage
- Excellent RF Performance
- DC Pass or DC Block options
- Bulkhead Grounding
- L-Bracket and Wire Lug Available



FPLNFD05

MADE IN THE USA - Designed, Assembled and Tested! 

Standard FPL 1100 - 1700 MHz Part Numbers:

Part Number	Surge	Protected	Voltage	Frequency (MHz)	Type
FPLNFD000	NF	NF	00	1100 - 1700	DC Block
FPLNFD0xx	NF	NF	+5, +12, +24, +/- 48	1100 - 1700	DC Pass
FPLNMD0xx	NF	NM	+5, +12, +24, +/- 48	1100 - 1700	DC Pass
FPLTFD000	TNC-F	TNC-F	00	1100 - 1700	DC Block
FPLTFD0xx	TNC-F	TNC-F	+5, +12, +24, +/- 48	1100 - 1700	DC Pass
FPLTFMD0xx	TNC-F	TNC-M	+5, +12, +24, +/- 48	1100 - 1700	DC Pass
FPLNFS0xx	NF	SMA-F	+5, +12, +24, +/- 48	1100 - 1700	DC Pass

Contact Primus at 800-435-1636 or support@primuselectronics.com for more information!

ALL-IN-ONE EDGE™ SENSOR

Ultimate flexibility in a single rugged housing

The All-In-One Edge Sensor is a highly customized solution that combines two of PCTEL's top platforms in a single rugged housing. Customers can choose their radio connectivity between LoRa, cellular and Bluetooth as well as select on-board and external sensors which have the ability to transport the data to the business viewing application of their choice. Using PCTEL's core antenna platform within the Edge Sensor allows customers to reliably reduce the number of units deployed in the field. Customers can select not only the radio technology, but also the specific sensors needed based on the application, whether it is a new greenfield deployment or transforming existing wired sensors to low-cost, easy-to-maintain wireless technology.



- **Integrated sensor and antenna platform for high performance**
- **Ability to connect and report multiple external sensors**
- **Ruggedized platform IP67 rated**
- **Ability to connect to power and battery backup on board along with external sensor powering capability**
- **Pick and choose on-board and external sensors**
- **Ability to read from multiple on-board sensors**
- **Customizable application and firmware**

Contact Primus at 800-435-1636 or support@primuselectronics.com for more information!

SMARTDISC MIMO COMBINATION ANTENNA



SmartDisc MiMo Combination Antenna supporting up to 4 in 1 -Cellular MIMO 2G, 3G, 4G, GNSS and BT/WiFi in a low-profile enclosure with durable design. The antenna can be mounted on metal or non-conductive materials enabling flexible and easy installation. Ideal for vehicle and load handling equipment utilizing fleet management, smart city and mobile gateways. Dual feed GNSS antenna enables excellent Axial ratio and gain. Pre-filtered LNA ensures functionality in a combination antenna.

- **Cellular: 4G, 3G, 2G, 698-960MHz and 1710-2690MHz**
- **GNSS: 1559-1606MHz (GPS, Galileo, Glonass and Beidou)**
- **BT/WiFi: 2400-2485/4900-5900MHz**
- **Pre-filter LNA with Dual feed GNSS antenna**
- **IP67 class**



Contact Primus at 800-435-1636 or support@primuselectronics.com for more information!

Mobile Mark Antenna Solutions

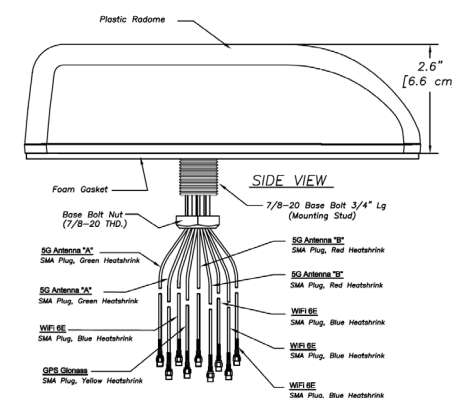
MXG944

SURFACE MOUNT MIMO ANTENNA

The MXG944 Antenna (4x 5G/LTE, 4x WiFi 6E/Bluetooth, 1x GNSS) provides complete coverage over all Cellular and WiFi 6E Frequencies, along with operation over GNSS Frequencies. GNSS operates on GPS, Galileo, Glonass, QZSS and Beidou at 1561, 1575, & 1602 MHz. Multiple WiFi 6E and Cellular elements provide MIMO coverage for both. This array of elements allows for a highly versatile antenna, while still managing to maintain an aerodynamic, sleek, and compact form, with all 9 elements being contained within the narrow profile of the MX series radomes. This Series is ideal for Public Safety and Emergency vehicles such as the Ford Police Interceptor.

*Specify MXG944-HAHVHC-B-180 for the version with Fakra Connectors.

Contact Primus at 800-435-1636 or support@primuselectronics.com for more information!



Primus helps with sign up for a number of training classes, certifications, and educational presentations for your product and fall protection training needs. Below are some upcoming trainings offered through CITCA.

Bradley, IL

January 15th- Qualified rigger, hoist, and signaler Certification

January 16th-18th- Climber/Rescuer

January 15th- January 19th- Train-the-Trainer for Climber/Rescuer and Qualified Rigger

Minneapolis, Minnesota

January 30th- February 1st- Climber/Rescuer

February 2nd- Qualified rigger, hoist, and signaler Certification

Contact our Primus sales representative Matthew Dodge for registration help at mattd@primuselectronics.com.

PRIMUS

4180 E. Sand Ridge Rd.
Morris, IL 60443

