

Prime Connection

3Q 2025



(800) 435-1234 | support@primeconnection.com

P4/ PRIMUS
- GRILL, CHILL,
AND CELEBRATE!

P5 / PRIMUS
- WIWA SUMMER EVENT

P7 / ANDREW
- BACKHAUL TO THE FUTURE!

P8 / ICT
- ICT INTRODUCES NEW 480-WATT DIN-
MOUNT POWER SUPPLY

PRIMUS

The Difference in Wireless Distribution

Primus
4180 E Sand Ridge Rd.
Morris, IL 60450

Quotes and Order Support
(800) 435-1636 tel
(800) 767-7605 fax
support@primuselectronics.com

Office Hours
Monday - Friday
7 am - 6 pm

Pickup Hours
Monday - Friday
7 am - 6 pm

Connect with us



Proudly serving our customers since 1980.
Privately held and proud of it.
President – Michael A. Johnson



Trade Shows & Training

TRADE SHOWS

UTC Region 1, 2, and 4, 2025 - September 29th-October 1 - Chicago, IL
NATE 2026 - February 23-26, Las Vegas, NV
IWCE 2026 - March 16-19, Las Vegas, NV

TRAINING

Anritsu SiteMaster™ Certified Line Sweep Training 2-Day Course, \$1,395 pp
Anritsu PIM Master™ Certified PIM Training 1-Day Course, \$1,395 pp
CITCA Authorized Climber
CITCA Tower Rescue & Competent Climber
CITCA Train-the-Trainer
CommScope, ComStar, ODM Fiber, EXFO, Harger, Bird Technologies, JMA, and Kaelus Trainings
available upon request.
Visit primuselectronics.com or contact Training with Primus at (800) 435-1636 or
training@primuselectronics.com for more information and registration.

Prime Connection is published as a corporate communications magazine for customers and friends of Primus. The magazine is published by the Primus Marketing Department at 4180 E Sand Ridge Road in Morris, IL. To receive an email notification stating the release of the next newsletter, please email marketingdept@primuselectronics.com or call (815) 267-7402.

E/M Wave **Tri-Band** IP67 Rated Roof Mount Whip Antenna

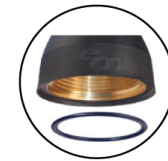
150-162 MHz
450-490 MHz
763-870 MHz

*High Strength
Impact-Resistant
17-7 Black Chrome SS Spring*

*Removable whip enables antenna base
NMO mount seal during vehicle wash*

*Stylish High-Impact Dual Shot ASA/TPE
Base Eliminates Ingress*

*Insert Molded NMO Brass Base
for Superior Performance*



EM-M43002

PRIMUS

For pricing and availability
please contact (800) 435-1636
or sales@primuselectronics.com

SUBSCRIBE TO PRIMUS

Click [HERE](#) to receive email updates from Primus and to make sure you don't miss a quarterly newsletter! We do our best to make it easy to learn about the latest developments and industry trends!

Grill, Chill, and Celebrate: Our 4th of July Team Event



On July 3rd the employees of Primus gathered for a cookout (and to show off our grilling and baking skills) to celebrate Independence Day.

Even in the sweltering July heat, we find ways to recognize our Primus family. As the holiday weekend approached, we felt this was a great way to celebrate our dedication to one another while also serving as a precursor to honoring our own country’s continued independence. You can see in our pictures, resident grill masters hanging out, cooking up everything from cheeseburgers to carne asada. Other employees completed the smorgasbord with salads, sides, and baked and frozen desserts.



Aside from the delicious cookout were games for employees to partake in. They could be seen throwing competitive games of bean bags, launching footballs across an open lot, and ultimately enjoying the afternoon with their colleagues.

The grand focus of this event was to celebrate the tight-knit community we’ve grown at Primus. Each employee represents a fiber of our being, and they are without a doubt the heart and soul of this company.



WIWA Summer Event July 29th, 2025



This years annual Wisconsin Wireless Association event held at Brewers Stadium in Milwaukee was the perfect night for baseball.

It was great to watch two rivals battle it out for first place. While Cubs fans may have left disappointed with the outcome, there were many happy Brewers fans celebrating the win.

As always, it was a pleasure connecting with many of our valued customers and making new acquaintances throughout the evening.

Primus is proud to sponsor and support WIWA, NATE and the Ronald McDonald House.

We look forward to being a part of this event again next year!





Primus helps with sign up for a number of training classes, certifications, and educational presentations for your product and fall protection training needs. Below are some upcoming trainings offered through CITCA.

Authorized Climber

October 14th-15th: Bradley, IL
October 28th-29th: Staunton, VA
November 4th-5th: Minneapolis, MN

Climber/Rescuer Coarse

October 14th-16th: Bradley, IL
October 28th-30th: Staunton, VA
November 4th-6th: Minneapolis, MN

ANSI A10.48 Qualified Rigger Hoist & Signaler Certification

October 13th: Bradley, IL

Contact a Primus sales representative for registration help at support@primuselectronics.com.

Train-the-Trainer

October 13th-17th: Bradley, IL



BACKHAUL TO THE FUTURE: LEVEL UP WITH THE NEW HX6-611-6WH/B DUAL-BAND/DUAL-POL ANTENNA

At Primus, partnership means more than providing products—it's about delivering value, longevity, and trust. By working side-by-side with our customers, we ensure solutions are not only reliable today but positioned to adapt as demands evolve tomorrow.

The rollout of 5G has accelerated worldwide, with more than 260 operators already live across 100+ countries. This rapid growth brings massive data demands, and every bit of that traffic must be carried back to the network core. For operators, the challenge is how to expand backhaul capacity efficiently while minimizing costs and complexity.

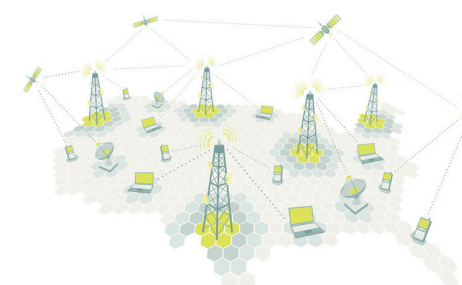
Microwave remains the backbone of backhaul, but expanding capacity isn't simple. Towers are already crowded with new technologies like massive MIMO, multiband gear, and higher-order modulation schemes. Adding more antennas creates issues with weight, wind loading, and leasing costs, not to mention risks of passive intermodulation and higher energy consumption.

That's where the ANDREW ValuLine® HX6-611-6WH/B dual-band, dual-polarization antenna comes in. This solution combines 6 GHz and 11 GHz band support in a single, rigorously tested design. By replacing multiple single-frequency antennas with one, operators can streamline deployments, cut structural requirements, and reduce operating expenses.



Beyond cost savings, the HX6-611-6WH/B improves link performance, simplifies frequency planning, and enhances spectral efficiency. It also leverages existing six-foot mounts, speeding installation and reducing the need for major infrastructure changes. The result: better network performance today and more flexibility for future growth.

Here at Primus, we believe in building partnerships that last. Our hands-on approach ensures every deployment adds real, measurable value. To learn more about ANDREW ValuLine Microwave Antennas, contact a Primus sales representative today.



Click [HERE](#) to view on our website!

ICT INTRODUCES NEW 480-WATT DIN-MOUNT POWER SUPPLY , ADDING 33% MORE POWER CAPACITY TO THE DIN SERIES FAMILY



Available starting August 25, 2025, ICT is adding a new 480-watt, DIN-rail DC power supply to its DIN Series product family.

Launched in 2023, the DIN Series family, consisting of a 360-watt DIN-mount DC power supply and intelligent six-output DC power distribution unit, has been an industry-leading product line, providing intelligent DC monitoring and power control through TCP/IP Ethernet.

The DIN Series intelligent power distribution unit is designed to distribute DC power to six individual outputs, each rated up to 12 amps continuous. The integrated Ethernet controller provides reporting of output current and status for each individual load, as well as the

ability to remotely power cycle each output individually. It is designed for DIN-rail mount installations.

The new 480-watt power supply unit, available in 24- and 48-volt models, expands on the existing 360-watt power supply offering, providing an additional 33 per cent of power capacity for DC loads and battery charging. Paired with the intelligent DIN Series power distribution unit, the new 480-watt power supply will support lead-acid and lithium-ion battery chemistries; with battery state-of-charge monitoring; battery run-time remaining reporting; and battery discharge testing, allowing users to proactively test the health of their connected batteries.

Manufactured in North America by ICT, the DIN Series product family are ideal for small wirelesscommunication sites, outdoor power enclosures, IoT, SCADA, security and surveillance, and industrial DC power applications.

For more information contact a Primus Sales Rep at 800-435-1636 or support@primuselectronics.com

DID YOU KNOW **PRIMUS** Does New Hire Safety Kits?



Failure to prepare is preparing to fail. Get yourself prepared and protected by talking to our sales team about getting your hands on a Primus PPE Kit!

The all-in-one safety kit has everything you need to kit out your new hires. The New Hire Safety Kit includes all of the following along with the safety harness of your choice. Simply add this kit along with your choice harness and a member of our dedicated sales team will take care of the rest.

Includes:

- (2) 1/2" Gate Steel Carabiners
- (2) 1" Gate Steel Carabiners
- (1) Spreader Bar
- (2) Deep Canvas Drawstring Bolt Bags
- (1) Lad-Saf Detachable Cable Sleeve
- (1) Twin Leg Y-Lanyard
- (1) Positioning Rope Lanyard
- (1) Vented Climbing Helmet
- (1) Gear Bag

**Click Here to view
on our website!**

PRIMUS

4180 E Sand Ridge Rd.
Morris, IL 60450

