

Prime Connection

2Q 2021

PRIMUS

PRIMUS

The Difference in Wireless Distribution

Primus
4180 E Sand Ridge Rd.
Morris, IL 60450

Primus West
601 S 55th Avenue
Phoenix, AZ 85043

Quotes and Order Support
(800) 435-1636 tel (Morris, IL)
(480) 606-1520 tel (Phoenix, AZ)
(800) 767-7605 fax
support@primuselectronics.com

Office Hours
Monday - Friday
7 am - 6 pm

Pickup Hours
Monday - Friday
7 am - 8 pm

Connect with us



Proudly serving our customers since 1980.
Privately held and proud of it.
President – Michael A. Johnson



Trade Shows & Training

2021 TRADE SHOWS

ENTELEC 2021 / August 10-12 / Houston, TX / Booth #420
IWCE 2021 / September 27-30 / Las Vegas, NV / Booth #147

TRAINING

Anritsu SiteMaster™ Certified Line Sweep Training 2-Day Course, \$1,395 pp
Anritsu PIM Master™ Certified PIM Training 1-Day Course, \$1,295 pp
CITCA Authorized Climber
CITCA Tower Rescue & Competent Climber
CITCA Train-the-Trainer
CommScope, ComStar, ODM Fiber, EXFO, Harger, Bird Technologies, JMA, and Kaelus Trainings available upon request.
Visit [primuselectronics.com](https://www.primuselectronics.com) or contact Training with Primus at (800) 435-1636 or training@primuselectronics.com for more information and registration.

PRIMUS

Primus remains open for business!

Our sales and customer service teams are here to process and/or expedite your orders. The staff operating Primus distribution centers in all locations remains fully operational while isolating according to the CDC’s guidance. Our website - www.primuselectronics.com - is fully functional accepting quotes, new accounts, and providing information on solutions at Primus.

- We have enabled all employees who are capable to work from home wherever possible.
- We have initiated proactive isolation measures for those on location.
- We have eliminated all travel until conditions warrant other wise.
- We have eliminated non-essential visits to our locations.

Everyone at Primus hopes that your friends and families are staying safe and healthy during these trying times and hope to fulfill all of your product needs.

Please contact Primus at 800-435-1636 or at support@primuselectronics.com with any questions.

NEW HOURS FOR PRIMUS

PHOENIX, AZ



Primus is excited to announce new hours for the Primus facility in Phoenix, AZ. We are now open 6 AM - 6 PM, Monday through Friday, Mountain Standard Time, to hopefully help make our availability more convenient for you!

WELCOME OUR NEW EMPLOYEE!



Steve Gillette comes to Primus with many years of sales and business experience, including 10 years in LMR. Steve will be developing new business opportunities for Primus from Southern Idaho through the Southwest in support of our Phoenix warehouse. Steve lives in The Dalles, OR with his wife Patti and four furry friends.

QUALITY YOU CAN DEPEND ON



EMR DIPOLE ANTENNAS

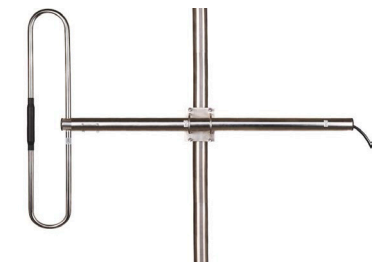
The EMR150DP and EMR450DP series are all-welded stainless steel, highly durable dipole antennas built to endure the toughest conditions. Available in single, dual, and quad element dipole arrays in VHF and UHF radio bands, the wide bandwidth and high efficiency of these antennas make them the perfect match for a wide variety of applications. Each element is built to endure long term exposure from dust, UV radiation, salt spray, acid rain and corrosive airborne chemicals.

Multiple elements can be stacked for increased gain, in three configurations to allow for different shaped radiation patterns in the H plane, including 1/4, 1/2, and full wavelength spacing.

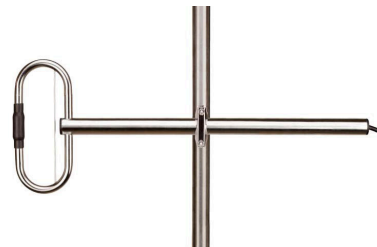


Model #	EMR150DP	EMR150DP2	EMR150DP4
Dipole elements	1	2	4
Frequency Range (continuous)	136-174 MHz	136-174 MHz	136-174 MHz
Gain (dependent on spacing)	1 - 2.5 dBd	4 - 5.5 dBd	6 - 9 dBd
Vertical beamwidth @ 1/4 WL	80°	35°	15.8°
Maximum exposed area	0.73 ft²	1.6 ft²	3.4 ft²
Lateral thrust @ 100MPH	29 lbs.	64 lbs.	140 lbs.

Model #	EMR450DP	EMR450DP2	EMR450DP4
Dipole elements	1	2	4
Frequency (continuous)	360-520 MHz	360-520 MHz	360-520 MHz
Gain (dependent on spacing)	1 - 2.5 dBd	4 - 5.5 dBd	6 - 9 dBd
Vertical beamwidth @ 1/4 WL	80°	35°	15°
Maximum exposed area	0.27 ft²	0.68 ft²	1.6 ft²
Lateral thrust @ 100MPH	11 lbs.	29 lbs.	64 lbs.



(Mast customer supplied.)



- Ideal for Public Safety, Government, LMR, and Railroad Applications
- Wide bandwidth, available in VHF and UHF
- Stainless steel construction for weather and corrosion resistance
- No tuning required, plug & play!

For more information contact a Primus Sales Representative today at: sales@primuselectronics.com

COMMSCOPE - CBRS: Maximize the opportunities, minimize the obstacles

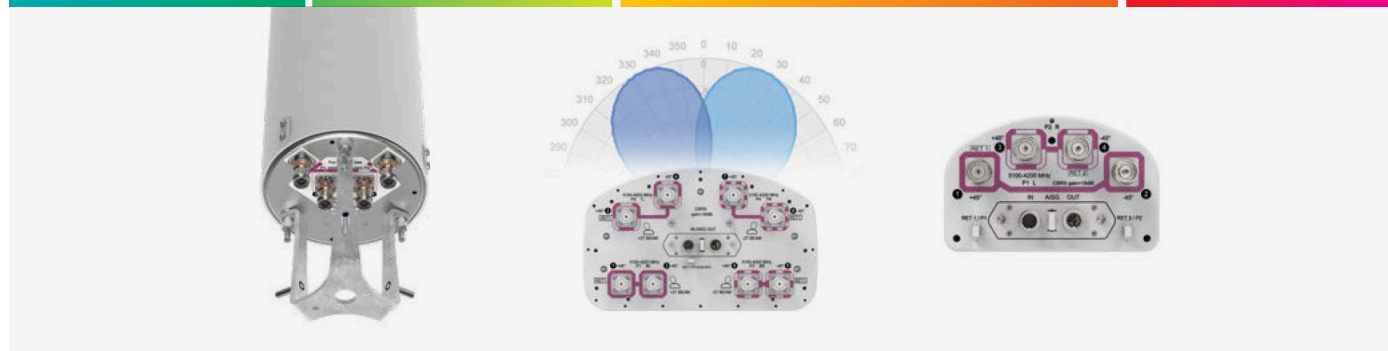
For more information
contact a Primus
Sales Representative
at 800-435-1636 or
support@primuselec-
tronics.com

For cable operators, wireless carriers and enterprises, CBRS is a unique opportunity. Its 150 MHz of mid-band spectrum enables a range of applications—from industrial internet of things (IIoT) and mobile capacity augmentation to fixed wireless access and private LTE or 5G networks. Leveraging the opportunity, however, depends in large part on having the right equipment.

In any wireless network, success starts with the antenna. Successful CBRS deployment requires antennas that are not only designed to support the new spectrum, but can help operators optimize performance in a variety of settings.

In urban/suburban areas, network operators are looking for antenna solutions that can maximize capacity and achieve optimal gain to balance coverage for uplink and downlink. In less dense rural markets, it's more about improving coverage using the fewest possible radios.

Flexibility and performance for any CBRS applications



Omni antenna solutions

Twin beam antennas

Sector antennas

future-ready models for sub 6 GHz bands

RAILROAD

WESTERMO - EN 50155 Ethernet Broadband Bridge - DDW-002-B1

The Wolverine series consists of Ethernet extenders and bridges for propagating Ethernet traffic over existing cabling. The DDW-002-B1 is based on power line communication (IEEE 1901) and is capable of bridging high bandwidth Ethernet traffic over 2-wire cables, even when there are oxidized connectors.

This can lead to considerable financial savings when refurbishing a train with Ethernet communication, as existing train couplers can be reused without the need for a costly rebuild or even replacement. By simply installing a DDW-002-B1 on each side of the coupler, a bridge connecting the Ethernet networks on each side is created. The fact that no configuration is needed further contributes to the ease of use.

The DDW-002-B1 has been thoroughly tested by certified labs to ensure its compliance with the standard for electronic equipment used on rolling stock, the EN 50155. For several characteristics, Westermo exceeds the requirements mandated by the standard.

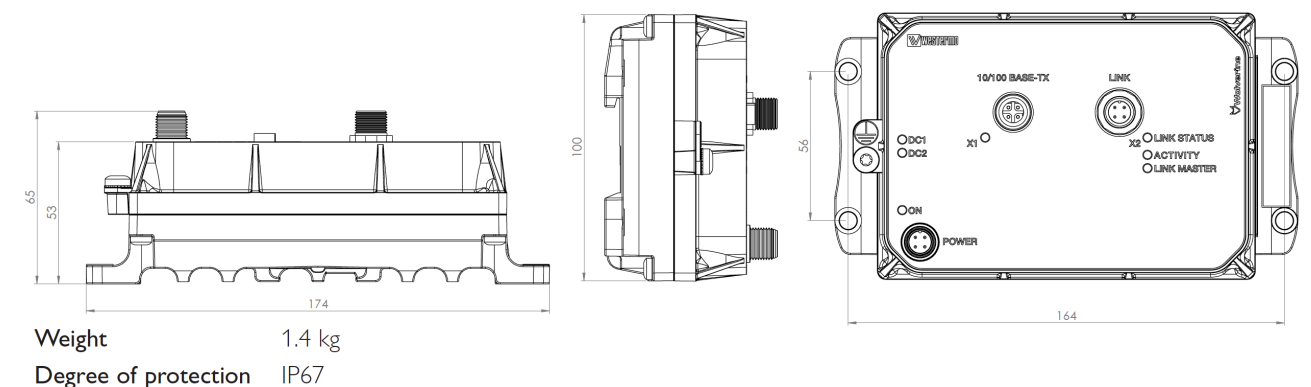
Furthermore, the design is based on Westermo's long experience within the rolling stock market, which brings benefits such as vibration safe integrated connector threading, IP67 ingress protection with GORE-TEX® membrane to prevent condensation



water build-up and ultimately a high MTBF and long service life under the harshest conditions.

The DDW-002-B1 is built in Westermo's Swedish factory which is renowned for its extremely high standard, as confirmed by a multitude of quality audits by demanding international customers. The factory is organized according to lean manufacturing principles and it is equipped with sophisticated state-of-the-art quality assurance equipment.

Meeting the requirements for rolling stock, makes the DDW-002-B1 also very well suited for deployment in other applications with severe operating conditions and extreme environments.



To answer any questions please contact Primus at support@primuselectronics.com.

- Contributed by Pat Morgan

(800) 435-1636 | support@primuselectronics.com

BIGBOOST STANDARD WHIP

WICKED TECHNOLOGY



Extremely Durable

Premium blend of synthetic rubber is molded into the base of the antenna making it extremely durable. The blue covering is designed to allow comfort and flexibility without constraining power.

Bodacious Bandwidth

Extend your reach by replacing the standard antenna on your radio with the BigBoost Standard (BBS). The BBS will increase fringe area coverage so you can talk further.

Full Spectrum - VHF 136-174 MHz

The BigBoost Standard is a full spectrum VHF antenna. Making it very versatile when working with various VHF networks.

Compatible Radios

- | | |
|-----------------|------------------|
| SMA-M | SMA--F |
| • BK- KNG | • BK - BKR |
| • BK - KNG2 | • Motorola - APX |
| • Midland - STP | • Motorola - MTX |
| SMA--F | |
| • Kenwood -TK | |
| • Kenwood - NX | |
| • iCom - IC | |
| • Hytera - PD | |
| • Hytera -TC | |

For more information
contact a Primus
Sales Representative
at 800-435-1636 or
[support@primuselec-
tronics.com](mailto:support@primuselectronics.com)

PRIMUS

4180 E Sand Ridge Rd.
Morris, IL 60450

