

Prime Connection

3Q 2020

PRIMUS

P4 / ICT
DC Power Solutions

P6 / BIRD
Mission Critical Reliability
Bird Signal Boosters

P7 / RAILROAD
Sinclair Mobile Duplexers

P8 / COMMSCOPE
New FBR-COIL-S

PRIMUS

The Difference in Wireless Distribution

Primus

4180 E Sand Ridge Rd.
Morris, IL 60450

Primus West

601 S 55th Avenue
Phoenix, AZ 85043

Quotes and Order Support

(800) 435-1636 tel (Morris, IL)
(480) 606-1520 tel (Phoenix, AZ)
(800) 767-7605 fax
support@primuselectronics.com

Office Hours

Monday - Friday
7 am - 6 pm

Pickup Hours

Monday - Friday
7 am - 8 pm

Connect with us



Proudly serving our customers since 1980.

Privately held and proud of it.

President – Michael A. Johnson



Trade Shows & Training

2020 TRADE SHOWS

Due to the Covid-19 Virus we are postponing attending tradeshow until 2021.
Thank you for your ongoing support.

TRAINING

Anritsu SiteMaster™ Certified Line Sweep Training 2-Day Course, \$1,395 pp

Anritsu PIM Master™ Certified PIM Training 1-Day Course, \$1,295 pp

CITCA Authorized Climber

CITCA Tower Rescue & Competent Climber

CITCA Train-the-Trainer

CommScope, ComStar, ODM Fiber, EXFO, Harger, Bird Technologies, JMA, and Kaelus Trainings available upon request.

Visit primuselectronics.com or contact Training with Primus at (800) 435-1636 or training@primuselectronics.com for more information and registration.

PRIMUS

Primus remains open for business!

Our sales and customer service teams are here to process and/or expedite your orders. The staff operating Primus distribution centers in all locations remains fully operational while isolating according to the CDC's guidance. Our website - www.primuselectronics.com - is fully functional accepting quotes, new accounts, and providing information on solutions at Primus.

- We have enabled all employees who are capable to work from home wherever possible.
- We have initiated proactive isolation measures for those on location.
- We have eliminated all travel until conditions warrant otherwise.
- We have eliminated non-essential visits to our locations.

Everyone at Primus hopes that your friends and families are staying safe and healthy during these trying times and hope to fulfill all of your product needs.

Please contact Primus at 800-435-1636 or at support@primuselectronics.com with any questions.

ICT - DC POWER SOLUTIONS

For Remote Wireless Sites

Increase Quality of Service and Reduce Down Time with Reliable DC Power Solutions for Wireless Communications Sites

Why DC Power Infrastructure for Communications Sites?

Providing reliable broadband internet service to remote, often rural locations can present many challenges. Due to the remoteness of many fixed wireless broadband networks, any network outage can result in loss of broadband service to customers for extended periods.

Frequent power outages are not uncommon, so being able to maintain power for network devices is critical.

Many regions also experience temperature extremes, with temperatures ranging from +30°C in summer, to below -20°C in winter.

These temperatures can cause issues with network equipment at communications sites, particularly batteries, which are susceptible to extreme temperatures and may not operate or charge correctly.

ICT has addressed these challenges by develop-

ing output is 180 or 360 watts, suitable for many wireless applications and devices.

The IntelliCharge Series provides the power to network devices at communication sites, in addition to charging backup batteries, which are critical for when AC mains power from the utility is lost.



When AC power is not available – this can be a relatively common occurrence – the IntelliCharge Series battery charger/power supply uses power from the backup battery banks installed at sites to provide continuous power to network devices. When AC power is restored, the IntelliCharge Series will power all load devices and recharge the depleted battery.

Temperature compensated charging allows for correct charging voltages based on the ambient temperature at the site, which is critical when ambient temperatures fluctuate.

For more information, please contact Primus at 800-435-1636 or support@primuselectronics.com.

Contributed by - Rob Menees



ing the IntelliCharge Series battery charger/power supply. The IntelliCharge Series is a three-stage battery charger/power supply combination, which provides consistent, reliable 48, 24, or 12 volt DC power for remote communications sites. Power

WESTELL

PS Enhanced eBDA series NRTL Listed to ANSI/UL Standard 2524

The latest addition to Westell's industry-leading in-building wireless solutions for public safety radio enhancement solves reliable indoor communications for our emergency responders, including Fire, Police, and EMS, caused by modern building materials blocking up to 99% of the RF signal from outdoor tower sites. Our NEW Enhanced eBDA series offers over a dozen new features to the previous PS Series of Class B signal boosters that improve ease of installation, provides an easier path to AHJ acceptance and reduces total installed cost.

These new Enhanced Class B eBDA series solutions are NRTL Listed to ANSI/ UL Standard 2524 (the new UL Standard for In-building 2-Way Emergency Radio Communication Enhancement Systems) and feature a Built-in Alarm Annunciator, Integrated Battery Backup, UpLink Squelch, Improved Cabinet Interface, Smallest footprint in the industry, Intelligent Oscillation Management and much more. Offered in both a ½ watt and 2 watt dual band 700-800MHz versions these BDAs are available now.

For more information on Westell's BDA please contact one of our Primus representatives at 800-435-1636 or support@primuselectronics.com.

Product Highlights

Supports Dual-Band 700/800 MHz

NFPA 72/1221 Compliant Class B Amplifier

Power Output DL/UL

dB Gain

NRTL Listings: ANSI/UL 2524, UL 62368-1, UL 508A

Built-in battery charging and alarm circuitry



Redundant power supplies, operates on 110VAC or 24VDC

Built-in Annunciator

Uplink Squelch

FirstNet Ready

Low Power Consumption

Mission Critical Reliability - Bird Signal Boosters UHF, 700, 800 MHz

Equipped with advanced amplifier protection, the Signal Booster II+ from Bird provides Public Safety grade signal reliability and coverage in disadvantaged RF locations lacking in critical signal strength. Design innovations have delivered a light, compact design that provides more consistent and powerful signal coverage and amplification than ever before. New software capabilities provide critical local and remote status information allowing for real-time monitoring of critical systems.

SBII+ is compatible with all Public Safety radio technologies including conventional analog, P25 standard, and FirstNet public safety LTE.

Features:

- The web browser user interface allows for local and network configuration.
- Highly secure SNMP (v. 3.0) to send encrypted or in the clear system status trap messages to an SNMP Manager.
- Easily perform remote firmware updates.
- Built in oscillation management and detection with multiple user configurable choices.
- On board LED displays and remote OLC monitoring capability.
- Filtering is included to support most RF environments.
- Multiple power configurations: AC primary, DC primary or AC primary with DC backup.
- NFPA/IFC option includes all the alarms and battery backup configuration options to comply with the standards.
- Custom models available.

If you have any questions about Bird's Signal Boosters, contact a Primus Sales rep at 800-435-1636 or support@primuselectronics.com.



RAILROAD

SINCLAIR MOBILE DUPLEXERS

MD256 SERIES Mobile duplexer, 6 cavity, N female connector, 136-174 MHz

- Compact and rugged design, ideal for mobile applications
- Low insertion loss for optimal system performance
- High isolation to minimize interference
- Tx-Rx spacing: 4.5 to 5.2 MHz; 8 to 10 MHz

MD256 series is Sinclair's new line of mobile duplexer that features six resonators for outstanding performance. This duplexer allows bi-directional communication over a common antenna and is ideal for applications that call for a compact rugged unit, such as in vehicles, or where space is constrained.

Part# Connector Frequency range Separation

MD256N-1- 1 N(f) 136-148 MHz with 4.5 to 5.2 MHz separation

MD256N-1- 2 N(f) 136-148 MHz with 8 to 10 MHz separation

MD256N-2- 1 N(f) 148-160 MHz with 4.5 to 5.2 MHz separation

MD256N-2- 2 N(f) 148-160 MHz with 8 to 10 MHz separation



MD256N-3- 1 N(f) 160-174 MHz with 4.5 to 5.2 MHz separation

MD256N-3- 2 N(f) 160-174 MHz with 8 to 10 MHz separation

MD356 SERIES Mobile duplexer, 6 cavity, N female connector, 380-480 MHz

- Compact and rugged design, ideal for mobile applications
- Low insertion loss for optimal system performance
- High isolation to minimize interference

MD356 series is Sinclair's new line of mobile duplexer that features six resonators for outstanding performance. This duplexer allows bi-directional communication over a common antenna and is ideal for applications that call for a compact rugged unit, such as in vehicles, or where space is constrained.

The Tx and Rx frequency separation available is 5 or 10 MHz.

Part# Connector Frequency range Separation

MD356N-1- 1 N(f) 406-440 MHz with 5 MHz separation

MD356N-1- 2 N(f) 406-440 MHz with 10 MHz separation

MD356N-2- 1 N(f) 440-480 MHz with 5 MHz separation

MD356N-2- 2 N(f) 440-480 MHz with 10 MHz separation

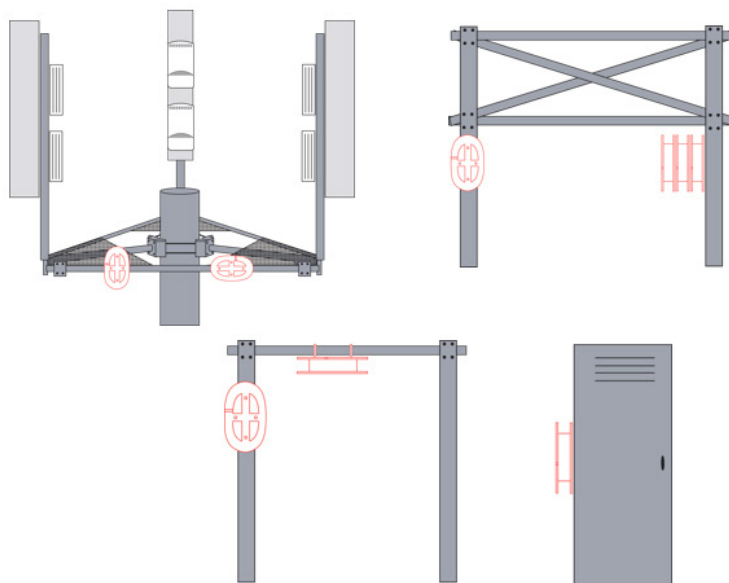
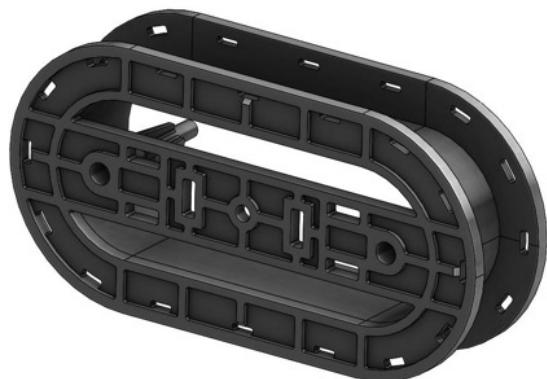
MD356N-4- 1 N(f) 380-400 MHz with 5 MHz separation

MD356N-4- 2 N(f) 380-400 MHz with 10 MHz separation

For more information contact a Primus Sales Representative at 800-435-1636 or support@primuselectronics.com.

Commscope's New FBR-COIL-S

FBR-COIL-S



We are pleased to announce that we can take orders now for FBR-COIL-S. This new Excess Fiber Management device neatly, safely, and securely stores up to 5 meters of excess fiber cable, and offers an opportunity to replace typical metal “slack boxes”. FBR-COIL-S is perfect for managing excess fiber cable in CRAN or Macro Site applications, with integral mounting points, facilitating mounting to tower top or tower bottom support structures, as well as equipment cabinet, shelters, and underground fiber enclosures (hand holes).

Why it Matters

FBR-COIL-S is a polymer excess fiber management coil without metallic components. Even the included tower/structure attachment hardware is polymer and aids in customers' PIM mitigation efforts. Lightweight, low-profile, rounded ends reduces tower

loading and wind loading on structures, potentially saving customers on tower lease fees. UV stable and strong enough to withstand the toughest environments.

It neatly coils 5 meters (16 feet) of fiber cable up to 7mm in diameter (typical fiber jumper), helps customers standardize on jumper lengths, less expensive than typical metal slack boxes, comes with appropriate PIM-free mounting hardware and fiber-securing ties. No need to purchase additional parts.

Available For Order Now!

For more information contact a Primus Sales Representative at 800-435-1636 or support@primuselectronics.com.

NEWMAR

Rugged AC UPS Series

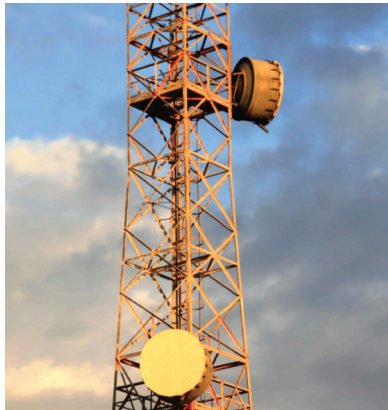
NEW!



Dependable solution for all outdoor, network, or industrial applications where loss of power is unacceptable or carries a high cost

FEATURES

- Wide range of Automatic Voltage Regulation
- (AVR) allows for continued normal operation
- Temperature compensated charging enhancing battery life
- SNMP network card, RS-232 and USB ports included for easy system monitoring
- LCD screen for quick access to system diagnostics
- Front panel connections for easy install
- Alarm contacts (six sets)



| Model | Input Voltage | Output VA/Watts Continuous | Power Factor | Nominal Battery Voltage |
|----------------|---------------|-------------------------------|--------------|----------------------------|
| AC-UPS-24-700 | 120V AC | 700/700 | 1 | 24V DC |
| AC-UPS-48-1200 | 120V AC | 1200/1200 | 1 | 48V DC |
| AC-UPS-48-2000 | 120V AC | 2000/1600 | 1 | 48V DC |

For more information, please contact Primus at 800-435-1636 or support@primuselectronics.com.

PRIMUS

4180 E Sand Ridge Rd.
Morris, IL 60450

