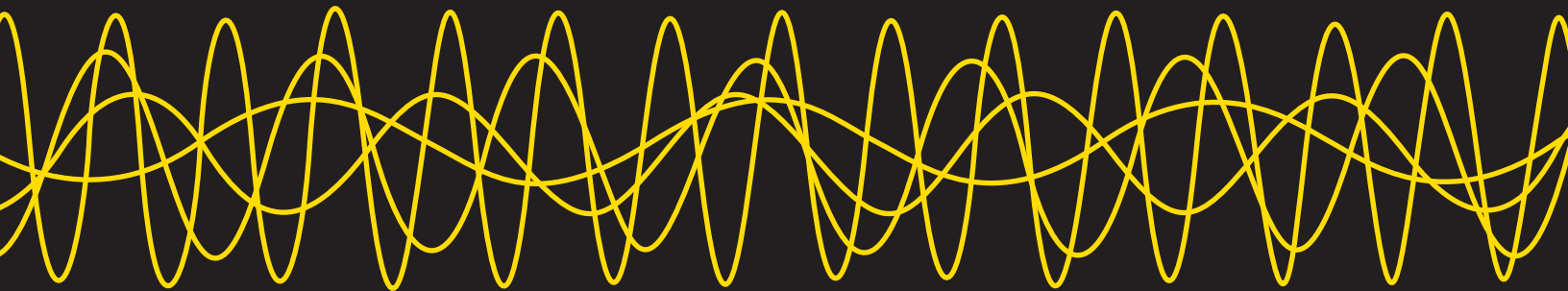


PRIMUS

RADIO SYSTEM SOLUTIONS



101000010100100100100101001101010101011100111000101100001010011001010101010000111
00001010010011010010100110101011
110010010010010100011101001101000010011000101001000

WIRELESS SOLUTIONS AND PRODUCTS





Whether you need assistance on a complete radio systems solution or specific aspects of a system that require improvement for better functionality, Primus is excited to support your next project.

Primus Headquarters

4180 E Sand Ridge Road

Morris, IL 60450

Office Hours: Monday-Friday, 7 am-6 pm CST

Pick-up Hours: Monday-Friday, 7 am-7 pm CST

Primus West

601 S 55th Avenue

Phoenix, AZ 85043

Office Hours: Monday-Friday, 7 am-6 pm MST

Pick-up Hours: Monday-Friday, 7 am-7 pm MST
and Saturday, 7 am-1 pm MST

Quotes and Order Support

800-435-1636 tel

800-767-7605 fax

support@primuselectronics.com

Connect with us



PRIMUS

Welcome to Primus, Radio Systems Group

Primus is a leading industry solutions provider of materials, logistics, and system design to support many market segments including wireless carrier, railroad/transportation, oil and gas, utilities, AM/FM/radio broadcast, and government/municipal needs.

Our value-added services and strong, beyond transactional relationships with our partners help us provide an experience that exceeds your expectations. More importantly, we help you identify and address problem areas in the creation or augmentation of your radio networks.

We can help with system design based on specific TX/RX requirements, topographical realities from simple SCADA and system repeater needs, to radio systems that require the integration of multiple frequencies, and radio products that span VHF through higher-frequency licensed radio spectrum.

If you need to incorporate satellite as part of the system solution, not only can Primus help with this process, we will also supply all the products backed by a solid radio system review and analysis to ensure confidence that the system will perform as required.

Complex challenges in closing critical radio links are well within our capabilities, bringing together the experience and knowledge of our internal support team and industry partners. We are eager to work with you by offering our collective expertise in radio technologies, satellite, infrastructure products, and all necessary active and passive components. Simply stated, we provide the ultimate solution of a complete system package.

Our areas of speciality include:

- Radios
- Antennas
- Bi-Directional Amplifiers
- Filters and Combiners
- Towers and Poles
- Infrastructure Materials
- Satellite - V-SAT and BGAN
- Grounding
- AC/DC and RF Power Protection
- Power Solutions
- Telecommunication Enclosures
- Cable Products
- Logistics
- Kitting
- Engineering Design Services

WIRELESS SOLUTIONS AND PRODUCTS



Oil Tank Farms



Oil Well Heads



Refineries



Offshore Oil Rigs



Oil and Gas
Pipelines



Mobile Asset
Tracking



Compressor Stations



or Stations



Water and Waste
Treatment Plants



Agriculture



Rail
Communications



Utility Substations



Campus
Connectivity



Mining

BUILDING CONNECTIVITY
FOR GENERATIONS



LOGISTICS, PROJECT, AND SITE-KITTING SUPPORT

Our commitment to you is much more than being an efficient supplier of products.

We understand you are busy, that your time is valuable, and you need a trusted partner to help with your needs. Our skilled team of professionals are ready to assist with industry-leading logistical, project, and site-kitting services.

We are committed to providing you with comprehensive and efficient services to meet your specific needs including a simple ordering process, available and proactive sales team, and unsurpassed logistical capabilities.

Our strong emphasis on inventory availability, accurate and timely order fulfillment, and on-time delivery enable you to reduce the costs of inventory, procurement transactions, and shipping.

With our impressive centrally-located distribution center in Morris, Illinois, products will reach your facility quickly.

Our experience and expertise in transporting products safely, securely, and efficiently has earned Primus an outstanding reputation as a provider you can rely on with excellent on-time and damage-free delivery standards.

Primus also offers kitting solutions that allow you complete control of customized part numbers and shipments containing multiple products picked and packed identically saving you time. We offer this complimentary service with flexibility and no change in order fulfillment times.

Our commitment to accuracy and timeliness will ensure all of your packaging and kitting requirements consistently exceed your highest level of satisfaction.

Simply stated, Primus is your trusted partner and ultimate solutions provider.



- Skid and LTL shipments are wrapped in black shrink wrap to ensure the package is damage-free when received
- We are the only company that offers 24/7/365 emergency shipments of stocked elliptical or air-dielectric cable
- Our warehouses operate from 7 am to 7 pm CST and MST
- Strategic zones within our warehouses allow a streamlined and organized process that facilitates accurate and expedient order fulfillment



ANTENNAS



RADIOS



BACKHAUL



ANTENNAS

From VHF to 40 GHz, Primus carries the most comprehensive antenna systems engineered to deliver performance. We offer solutions in backhaul, capacity enhancements, and network modernization that help you stay ahead of increasing network demand.

Our expansive portfolio of base station, microwave, and distributed antenna system (DAS) antennas utilize technologies that provide simple, reliable, and cost-effective implementation of these solutions. We also have an impressive inventory of white space antennas including omnis, segmented omnis, yagis, corner reflectors, and many more.

Our solutions deliver more uptime for your network, exceptional survivability, and a lower total cost of ownership. In addition to antennas, Primus is your complete supplier for all of the components needed for your antenna systems with the expertise to assist in designing, procuring, and deploying your antenna needs.



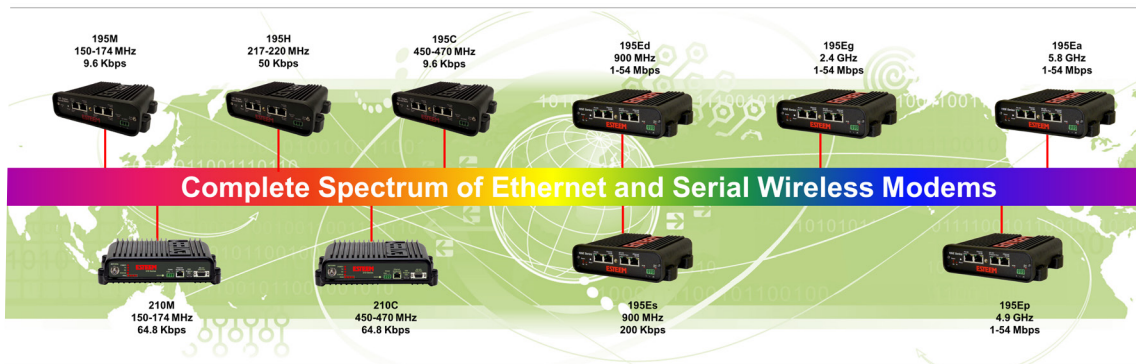
RADIOS

Primus offers a highly trusted line of radio solutions from VHF, UHF, White Space, 900 MHz in both narrowband OFDM and Frequency Hopping (FHSS) versions, 2.4 GHz WiFi, 4.9 GHz public safety, and 5.8 GHz backhaul radios.

In addition, Primus carries quality licensed microwave solutions and industry-leading satellite solutions from quality names you can trust.

Our dedicated radio team specialists are happy to assist with the selection of equipment best suited for your needs by providing free basic consulting, path studies, and virtual site surveys.

We also offer more in-depth RF modeling, consulting, and spectrum selection, as well as assisting within FCC interactions, if needed.



BACKHAUL

Primus has a variety of backhaul solutions to meet different requirements including spectrum usage, interference variables, environmental considerations, and more.

We offer 900 MHz in both narrowband OFDM and frequency hopping (FHSS) versions, 2.4 GHz WiFi, 4.9 GHz public safety, and 5.8 GHz backhaul radios to satisfy every requirement in unlicensed spectrum.

Primus also offers up to 38 GHz licensed

microwave radios often used for high-speed frequency-protected backhaul. In addition, we offer a variety of radio configurations from 6 GHz through 40 GHz, split mount configurations, and indoor/outdoor units.

When traditional communication technologies fail or become unavailable, Primus supplies BGAN and VSAT products which provide high quality VoIP, RoIP, FAX, data, and multimedia communications that work efficiently across satellite links. These

are excellent for disaster recovery and mission critical applications.

Every solution delivers more uptime for your network, exceptional survivability, and a lower total cost of ownership.

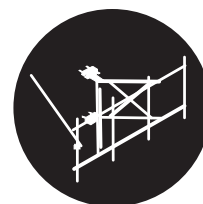
Primus proudly carries antennas from names you can trust along with all of the components required for your antenna system, offering expertise and experience to assist in designing, procuring, and deploying your antenna solutions.



TOWERS



RAPID DEPLOYMENT POLES



INFRASTRUCTURE SUPPORT
AND MOUNTS



TOWERS



SELF-SUPPORT TOWERS

Primus offers a full-range of self-supporting towers to meet your specific wireless needs. This includes simple models up to 96' that do not require a P.E. stamped drawing, to 251' engineered towers that meet EIA-222-F, TIA-222 G standards.

- Variety of self-supporting model designs to choose from ranging from 10' to 251'
- Angle-leg, knock down, round-leg, and all-weld designs
- The right structures for the right applications and load requirements

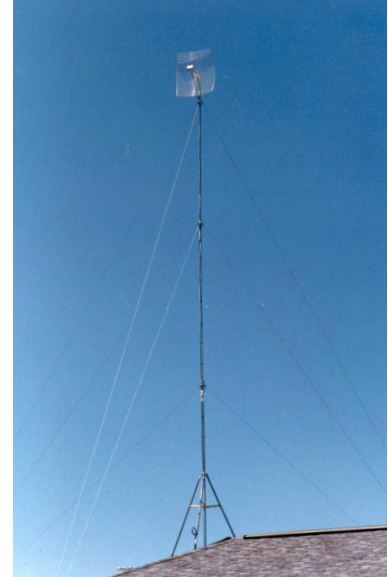


GUYED TOWERS

Choose from an extensive range of options covering up to seven different models of guyed towers. This includes light-duty structures that can technically be self-supported up to a certain height or wall-braced, to complete guyed packages ranging from 30' up to 1500' AGL.

The heavy-duty structures are designed for microwave installations, cellular/PCS, TV, and FM broadcast, as well as other communication needs.

- Light-duty models to 190'
- Heavy-duty models to 1500'
- Complete bundled packages include all guy wire and hardware
- Engineered designs



TELESCOPING MASTS

Often referred to as "pop-up poles," telescoping masts are a quick way to get very light-duty antenna systems on air. These masts can be bracketed to a building or other structure, as well as guyed. Telescoping masts are available in five lengths: 20', 30', 33', 40', and 50'.

- Pre-galvanized for corrosion protection
- Installations must be bracketed or guyed
- Guyed kits include guy wire, connection hardware, anchors, and ground mount (mast ordered separately)
- Roof mount brackets also available



RAPID DEPLOYMENT POLES

Rapid deployment poles solve a variety of problems and can be delivered and operational - carrying an active radio link - in less than half of a day.

Different types are available to meet varying project requirements. Hinged-pole models provide ease of equipment installation, allow troubleshooting and retrofitting without the need to climb, and eliminate the need for bucket trucks when service or technology maintenance becomes necessary. Ballasted rapid deployment poles are available from 20' AGL to 60' AGL and are a great solution for critical communications that need to get on-line, fast.

In most cases, poles can easily be deployed without the need for municipal intervention in regards to foundation design, review, or approval. Simply load the ballast tray with aggregate, according to tower height, and you have a tower solution that can be permanent, or easily picked up and relocated.

LIGHT- AND MEDIUM-DUTY MODELS

Light and medium-duty poles from 20' AGL to 60' AGL are available with various load capacities and feature the following:

- Multiple installation options including direct embedment, screw-in pier, and ballasted base frame
- No concrete foundation needed; aggregate backfill
- Climbable versions with removable step pegs and integrated 3/8" cable safety climb
- Hinged versions for easy accessibility and no need to climb

HEAVY-DUTY MODELS

Heavy-duty direct embedment monopoles from 60' AGL to 100' AGL are available and offer easy installation without a concrete foundation and "truck to transmitting" in less than half of a day:

- Provides a structure to handle multiple antennas, security cameras, and other devices
- Excellent option to use as a collection point for RTUs, well heads, mobile assets, etc.
- Acts as an inexpensive strategic asset in your network point-to-point backbone
- Fully engineered design: know exactly what you can deploy on your structure
- Perfect solution for creating a mid-point repeater point in a compromised LOS application



INFRASTRUCTURE MOUNTS AND SUPPORT

Primus is one of the largest suppliers of infrastructure steel materials in the country. Not only do we provide towers and antennas for radio systems, we also provide engineered/designed products to safely support other components such as antenna products on towers, poles, buildings, etc. In addition to the supporting steel products on structures, Primus also provides all the necessary ancillary products required for cable support, routing, and grounding along the RF path.

- Microwave dish mounts for towers, poles, and buildings
- Panel, omni, and yagi side arm mounts
- Sector frames
- Chain mounts for steel or wood poles
- Tie-backs/stabilizers
- Wall/roof/water tank mounts
- Cabinet/solar panel supports

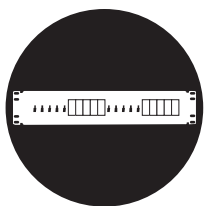




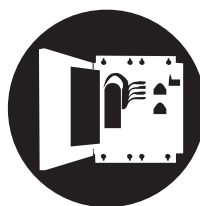
From a quick temporary deployment to easy-to-install permanent structures, we offer a wide range of poles to meet your needs.

Rapid deployment poles are an excellent complement to our portfolio of structures which includes carrier-grade multi-tenant towers, self-supporting and guyed towers, and simple telescoping masts. Primus carries a large selection of rapid deployment poles in a variety of strengths and sizes from 20' to 100' to meet all of your needs for light data collection and transport of critical backhaul to a central office.





POWER SOLUTIONS



CABINETS



POWER SOLUTIONS

- Offering power systems with up to 250 VAC input, 14,000 W, and 259 A total maximum output capacity
- Products that monitor all power system conditions including DC voltage, battery temperature, rectifier and battery current, and distribution failure
- 5 RU to DIN rail mount products
- Custom designs to meet the exact requirements of specific applications

Primus can support your system's power needs, from 12-48V, DIN rail mount, to cabinet rack mount. We offer products that can combine power loads, charging, and status monitoring in a single design from compact, remote site small cabinet applications to larger power centers.

With versatile, scalable products from our partners, we offer system designers an intelligent aspect to power systems including the ability to look into any AC or DC power system for 24/7 monitoring, alarm condition notification, and data logging of critical electrical functions.

Products from multiple partners specializing in power systems components assure you have the right options for your application needs.



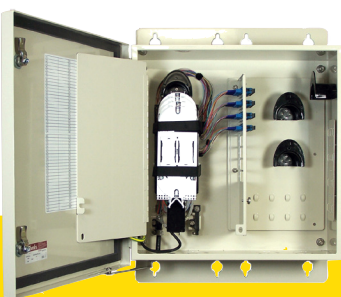
UNIVERSAL ENCLOSURES / CABINETS

You need the proper environmental enclosure that best suits your needs and applications, whether it is for wireless, fiber, copper, or coaxial equipment. We provide quality enclosures that are highly configurable to cover a broad range of wireless, wireline, and utility applications. These solutions are well-suited for backhaul, power, wireless infrastructure, and multi-purpose applications.

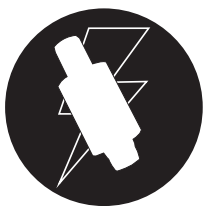
Available products include pad mount cabinets, site support and battery back-up cabinets, and rack mount and multi-purpose cabinets, many with thermal system options like heat exchangers, air conditioners, and direct air cooling.

If desired, Primus helps customize options for your cabinet and application by offering pre-wired cable harnesses, fiber splice and splitter trays, protection block interfaces, surge protection, locks and alarms, solar shielding, LED interior lighting, and more.

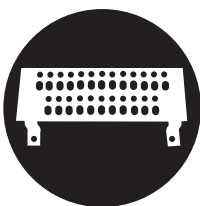
Primus also provides Fiber Interconnect Terminals (FIT) as pre-connectorized interconnect panel fiber drops to multiple broadband service customers at a fraction of the cost of Light Guide Cross-Connect (LGX) solutions. This type of terminal is a good solution in Advanced Meter Reading (AMR) networks as it provides for an easily accessible enclosure. The FIT can be pole mounted at a height where a technician can access for service or inspection without the use of a bucket truck.



- Flexible mounting options with multi-chamber designs
- Rugged and compact, multiple thermal options available for equipment protection
- Specific integrated solutions for Advanced Metering Infrastructure (AMI) or Automatic Meter Reading (AMR)



POWER PROTECTION



GROUNDING AND LIGHTNING



EXOTHERMIC TRAINING



POWER PROTECTION

We offer protection solutions for:

- Transmitters and flow meters
- Remote Terminal Units (RTU)
- Programmable Logic Controllers (PLC)
- Telecom

Electrical and communication assets are key to your growth, profitability, success, and serving the needs of your customers. Vast amounts of data streaming from various points in your network can be susceptible to interruption caused by power surges, lightning strikes, and other electrical disruptions.

Primus is your single-source provider of solutions for data line, RF, and AC/DC protection. Specific to energy and utility markets, Primus provides quality lightning protection for your critical field instruments, applications, measurement, SCADA, telecom, backhaul, and security equipment.

This assures maximum uptime during exploration and production at locations such as wellheads, gathering fields, compressor stations, pipeline metering, storage, and refining sites. Utility applications most commonly addressed include telecom, smart metering, SCADA, and Distribution Automation (DA).

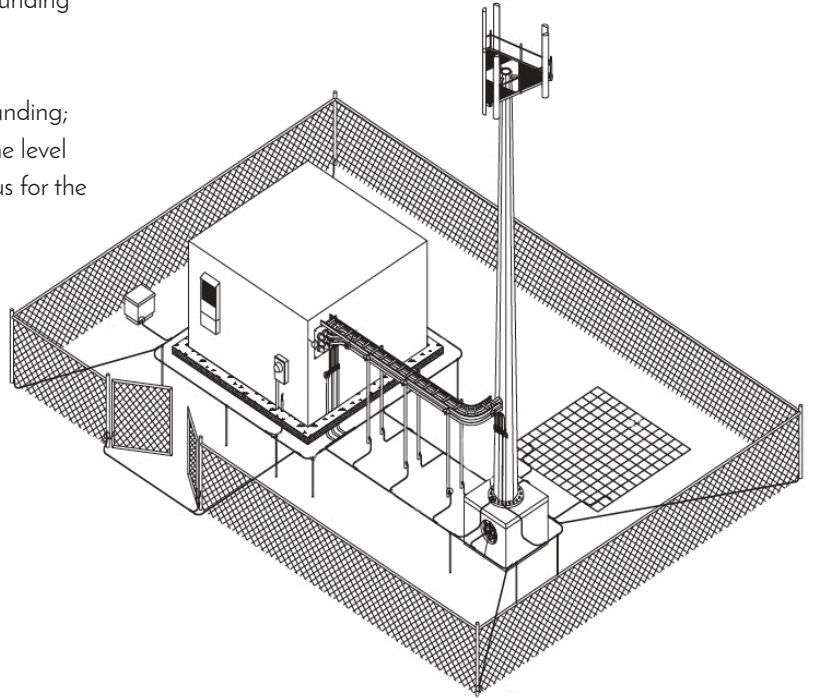
Working closely with our valued partners, we can help with custom solutions for surge and lightning protection, transient technology, grounding and bonding best practices, and standards required for Class 1 Div 2, CSA, UL, and CE.

GROUNDING & LIGHTNING

Keeping your tower/structure and compound area properly grounded helps ensure better safety and protection of your sensitive electronics. Every structure and compound benefits from a well-executed grounding system that diverts electrical strikes.

Differences in soil conditions may impact your tower and site grounding; always choose the best materials for given conditions to reduce the level of resistivity in the ground as much as possible. Consult with Primus for the best possible products for your specific needs.

- Wide selection of ground bars, plates, and rods
- Wires in stock from 12 AWG through 4/0, bare, tinned, stranded, and solid
- Air terminals
- Bonding clamps
- Exothermic molds, metals, igniters, and mold accessories
- Custom ground path solutions designed around specific products and applications



INDUSTRY TRAINING

Primus is committed to helping you acquire skills and competencies required to gain maximum value from product purchases and perform work safely. We are partnered with industry experts to certify and train your team on a variety of topics including lightning protection and grounding for wireless sites and exothermic welding.

Contact Primus for additional information on certifications and trainings.





CABLING, CONNECTORS, AND ACCESSORIES

Regardless of your operating frequencies, we can satisfy your needs with our extensive inventory of cabling, connectors, and accessories. Whether your system is utilizing CAT 5/6 type, braided 50 or 75-ohm cables, corrugated foam cables, elliptical waveguide for microwave backhaul, air-dielectric for broadcast, or even fiber, the cable component is an integral part of our bundled solution offering.

- Stocked braided products from LMR100 through LMR600, 9913, basic RG-8, etc.
- 50-ohm foam corrugated cables in stock from 1/4" through 1-5/8"
- Elliptical waveguide in stock covering 5.6 GHz to 7.125 GHz and 10.2 GHz and 11.7 GHz
- In-stock air-dielectric cable in 7/8", 1-5/8", and 3" sizes
- Plenum-jacket and riser-rated jacket cables for specific application requirements

Primus also keeps an impressive inventory of components commensurate to the level of cable we carry. Connectors, ground kits, hanger kits, hoisting grips, flex twist assemblies, dehydrators, manifolds, and more are strategically stocked to reduce or eliminate lead time issues.

- Cable re-spooling capabilities up to and including 3" air-dielectric cable
- Factory-certified connector installation and line pressurization (when required)
- Labeling, specific marking, multiple cuts/multiple spools, and multiple cuts/single spool

A quality installation using the right tools and components adds to system uptime and longevity. Whether it is cable support for tower structures, buildings, or water tanks, transitioning from tower to shelter, or within a shelter or communications center, we offer all the necessary ancillary products to support the cabling system within a wireless system.

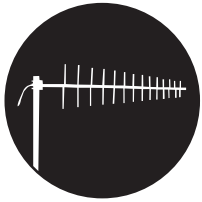


Primus is the only company to offer 24/7/365 emergency service for in-stock elliptical waveguide and air-dielectric cable processing.

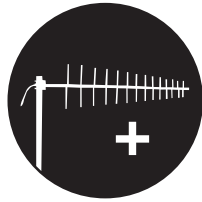
At any given moment, if your system goes down due to cable failure, we will cut, re-spool, and pressurize the cable and ship within 24 hours.



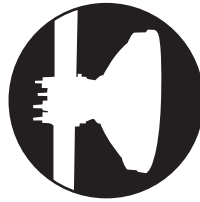
KEY APPLICATION SOLUTIONS



SCADA
NARROWBAND



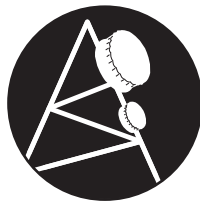
SCADA MIGRATION
WHITE SPACE



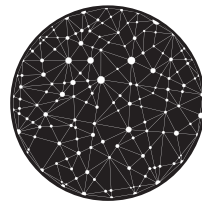
BROADBAND
900/2.4 GHz



BACKHAUL
4.9 AND 5.8 GHz



MICROWAVE



IOT TECHNOLOGY



LAND MOBILE
SATCOM PRODUCTS



SCADA NARROWBAND



Primus offers both VHF and UHF narrowband radios for SCADA applications to achieve up to 68 Kbps. Robust signaling, longer distances, and ultra-reliable links provide a solid foundation for SCADA needs. Whether your applications are oil and gas, utility operations, water/wastewater, agriculture, mining, etc., Primus has the solutions.

Our solutions feature user-configurable data rates, channel bandwidths, and operating frequency with the ability to operate on all channels within approved bands. The radios may be used to create Point-to-Point (PTP), Point-to-Multipoint (PTM), or Simplex (one-way) networks with priority routing support for voice, compressed video, and SCADA traffic.

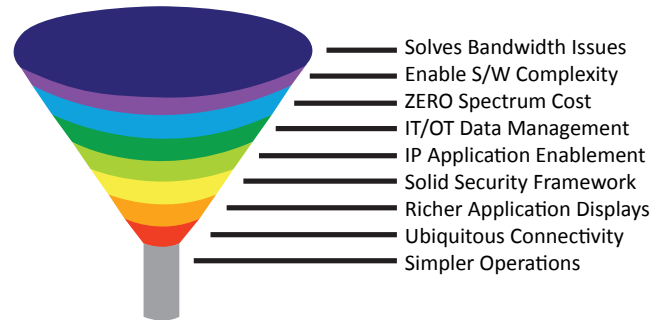
For ease of connectivity to both new and legacy networks, ethernet and RS-232 interfaces are available. We offer solutions in both licensed and secondary-use spectrum with local and remote network management provided through a local TCP/IP connection or over the air.



SCADA MIGRATION - WHITE SPACE

When narrowband networks become congested and applications stress your network's capabilities, it may be time to consider an alternative that can deliver much more bandwidth at SCADA-like distances and reliable non-line of sight runs.

White space radios run on old analog TV channels in the UHF spectrum: channels 14-51, 470-698 MHz with 6 MHz wide channels. This delivers the low end of broadband to sites with minimum infrastructure in most cases.



Typical application stress is defined as growing complexity of application software, e.g., adding seismic sensors to your network, layering on video security, VOIP, and a host of other IP tethered applications. Now you can enhance your operational networks to be exponentially more productive.



BROADBAND SOLUTIONS 900/2.4 GHZ

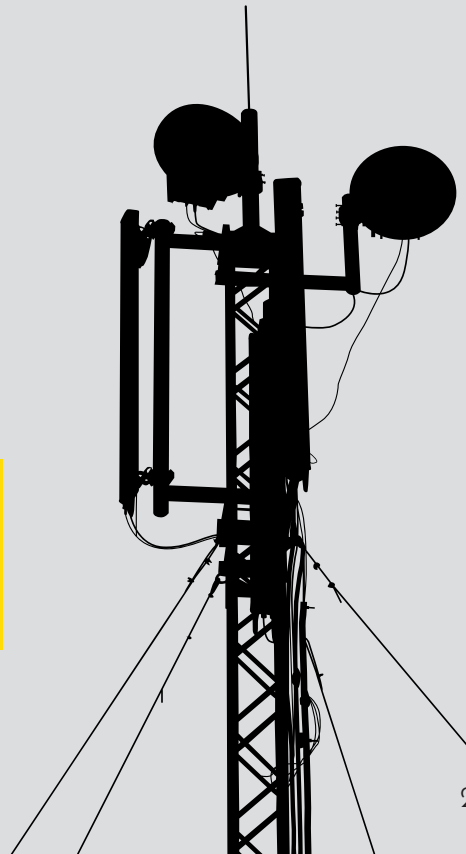
When line of sight shots are obtainable, Primus has a broad selection of solutions for higher bandwidth, shorter range PTP networks, and PTM unlicensed networks.

These radios connect to the enterprise backhaul or intermediate backhauls and provide the last step distribution of bandwidth to key segments and dense user groups. With 900 MHz, this may also be used as an intermediate backhaul. We can help you select the proper solutions for your requirements and budget.

Primus also coordinates resources for path studies, feasibility considerations, and configuration information for your network install.

Broadband offerings in unlicensed 900 MHz radios with a host of feature sets:

- FHSS capabilities
- Repeater modes
- Up to 54 Mbps data rates in line of sight
- Bridge and access point modes
- AES 128 encryption for secure networks
- MESH networking





BACKHAUL 4.9 AND 5.8 GHZ

4.9 GHz

Licensed 4.9 GHz is the backbone of wireless public safety networks and can stretch 20 miles at high data rates (54 Mbps). This band can also be utilized as fixed or mobile radios.

This flexibility enables first responders and services of all kinds to communicate and solve problems. 4.9 GHz is a line of sight technology which pairs well with our rapid deployment poles and other infrastructure products as well as the perfect antenna.

5.8 GHz

Our 5.8 GHz offerings provide low cost, easy to deploy, and reliable backhaul solutions. We can help you design and deploy backhuls for new and existing networks or additional spurs that are needed for operations.

Our 5.8 GHz solutions are powerful and support the following:

Redundant Repeater Routes:

- Self-healing networks
- Alternate communication paths

Industrial MESH Network:

- Manually configured
- Direct control over routing
- Configurable priority routing
- Spanning Tree Protocol (STP)/(RSTP)



MICROWAVE SOLUTIONS



Primus' licensed microwave solutions provide high capacities and long distances required by enterprise backhaul networks including guaranteed spectrum, powerful multi-gigabit payloads, redundancy, and reliable long range operation.

We provide configurations in licensed bands from 6 to 38 GHz wideband mod-

els for interior or exterior placement. Our solutions cover a variety of radio designs to best fit your needs: from indoor high power and split mount (ODU/IDU) units to outdoor compact units, there are multiple selections across frequencies.

Our radio products are highly configurable to handle TDM and IP technologies while

guarding against obsolescence when moving over to an IP-based unit.

We also supply power supplies, grounding kits, weatherproofing, antennas, surge protection, and much more.

We have drastically changed the economics of microwave networking!



IOT TECHNOLOGY



Both public and private businesses use Internet of Things (IoT) wireless technology for a variety of applications, and Primus supplies components that drive these solutions to you. Whether your project involves smart metering, pipeline management, smart grid, or more, we can provide hardware solutions to achieve your goal.

Primus supplies 3G, 4G, and LTE wireless modems that can assist in streamlining operations, manage multiple assets, watch over miles of pipeline from a central location, and more. Mobile gateways can provide mission-critical communications for in-vehicle applications. Gateways can secure multi-facility environments (campuses), banks/branch offices, restaurants, stores, and kiosks. Primus has the technologically-advanced products to keep you connected, monitoring, and up and running.



LAND MOBILE SATCOM PRODUCTS

Primus goes beyond traditional land-based technologies to compliment our wireless communications portfolio by offering an impressive selection of quality satellite products. This gives our customers another option to establish a link when no land-based scenario can effectively work 100 percent of the time.

From Broadband Global Access Network (BGAN) terminal products that access the INMARSAT network for quick deployment anywhere on Earth, to connectivity for M2M applications, to VSAT gear that is vital to a command center environment or disaster scenario, we have the solutions.

Primus stocks both manual and auto-deploy VSAT systems for command vehicle/truck mounting as well as portable-pack manual and auto deploy

systems. This allows fast, secure access to data and voice and internet connectivity when it is needed most. We can easily customize Ku Band VSAT systems to fit individual needs with multiple size BUCs and different band LNBs.

The in-stock offerings from Primus can provide critical connectivity after natural disasters and power outages while delivering breaking news and support for various levels of businesses operating in remote areas. BGAN terminals and

VSAT units are the tools that provide this connectivity when no other technology can.

Our high-end vehicle satcom terminal systems keep the mobile assets of military, law enforcement, media, and humanitarian organizations connected once deployed and when they arrive on site.



Land mobile satcom offerings include:

- Ultra-Portable BGAN terminals
- On-the-Move BGAN terminals
- Man-Portable VSAT
- On-the-Move VSAT
- Drive-Away VSAT
- Fly-Away Manual-Deploy VSAT
- Fly-Away Auto-Deploy VSAT
- Land-based Satcom Applications

Primus also provides unique, Push-To-Talk (PTT) systems based on BGAN terminal technology that provide extended coverage and improved call quality for mobile workforce communications.

This hybrid solution acts as an extension to traditional legacy PTT capabilities by adding operating support via terrestrial 3G/4G/LTE cellular networks (where

available), supplemented by a BGAN satellite network.

Combined with Land Mobile Radio (LMR) integration, our PTT solutions provide users with seamless voice communications, automatically routing voice and data traffic via the least expensive and most reliable network available, switching automatically in the background with no

interruption to the operator.

Our hybrid PTT solutions provide your workforce with reliable voice and internet connectivity in their vehicles by turning traditional LMR, cellular, and internet into a closed managed Wide Area Network that operates as a beyond line-of-sight communication system.

- Lowers expensive terrestrial infrastructure costs, allowing for a higher return on investment
- Constant communications in any environment while on the move
- Scalable from 2 to 1,000 units
- Cost effective: expands or replaces current LMR systems

PRIMUS EXPLORER EMERGENCY COMMUNICATIONS VEHICLE FOR MISSION CRITICAL COMMUNICATIONS

Primus stands ready to assist in ensuring your communications infrastructure is available 24/7 with our Primus Explorer Emergency Communications Vehicle (ECV) which is a NIMS compatible Type IV Mobile Communication Center.



The Primus Explorer Emergency Communications Vehicle is a NIMS compatible Type IV Mobile Communication Center designed as a deployable command and communications resource to support first responders, critical infrastructure, and other Primus customers who may have been affected by a catastrophic event and require mission-critical voice and data connectivity.

The Primus Explorer ECV is built around an IP-based foundation. As more agen-

cies, organizations, and companies rely on web-based applications, the cloud, and Voice-over-Internet-Protocol (VoIP), telephony incident managers and emergency operations professionals continuously learn to adapt to new technologies. IP-based communications make sure that resources are available on the scene regardless of where resources physically reside.

The Primus Explorer ECV uses satellite-based connectivity to provide bandwidth

for all voice, video, and data applications that need access to the Internet and other remote networks. It also uses terrestrial wireless connectivity, VoIP, and Radio-over-IP (RoIP) powered by a self-sustaining, uninterruptible power within the vehicle in both 12 VDC and 110 VAC environments.

Primus ensures your communications infrastructure is up-to-date, secure, and able to withstand or recover from any disaster or outage.





Product Line Card

QUALITY OFFERINGS

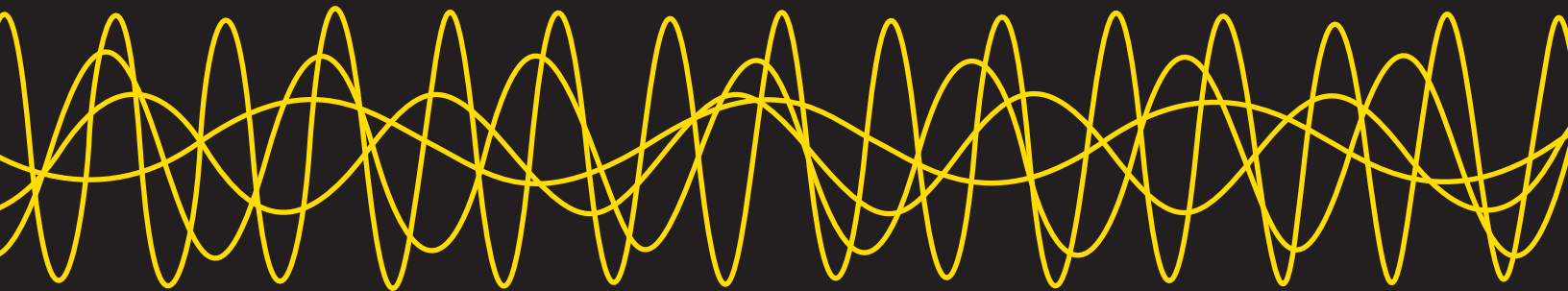
Distributed Antenna Systems (DAS)
Towers/Site Hardware
Microwave
Base Station Antennas
Mobile and Portable Antennas

Enclosures and Cable Management
Lightning Protection and Grounding
Cable, Connectors, and Jumpers
Power Systems
Test and Measurement Equipment

Tools and Jobsite Supplies
Installation Supplies
Safety Equipment and Supplies
Broadband Products
Radios and Satellite

FROM THE FOLLOWING MANUFACTURERS

3M	EMR Corporation	Milwaukee Tool	Samlex America
3Z Telecom	EM Wave, Inc.	MSA	SeamCraft
Allcom Products	Ergodyne	Multiplier	Sierra Wireless
Amphenol/Antel	Erico	mWAVE Industries	Sinclair
Amphenol Fiber Optic	Erin Rope	Narda Safety Test Solutions	Skylotec
Anchor Paint	Esteem	National Strand	Smiths Power Group
Anritsu	EXFO	Newmar	Speco Technologies
Astron Corporation	FallTech	Novabraid	Spectracom
Bee Electronics	Fiplex	ODM	Spinner
Belden	Flash Technology	Panorama Antennas	Stabila
Bird Technologies / TX/RX	Fractal Antenna Systems	PCTEL, Inc.	STI-CO
Burndy	Gabriel Antennas	Peabody RFTC Concealment	Straight Ahead Inc.
Cambium Networks	Galtronics	Pelican Case	Structural Components
Capital Safety	General Dynamics/SATCOM	Pelican Rope	Sumner
Cell Trees	Guardian	Peltor	Sunsight Instruments
Central Steel	Harger	Petzl	Suunto
Chicago Hardware & Fixture Co.	Highline Products	PMI	TEKO
CITCA	Hilti	PolyPhaser	Telephone Components
Cobham SATCOM	Hoffman	Preformed Line Products	Teletics
Commander Technologies	ICT	Premier Mounting Solutions	Telewave, Inc.
Commscope	iTech	Pryme Radio Products	Times Microwave
Comsite Hardware, Inc.	JMA	Prysmian Group/Draka	TJ Cope
Comtelco Industries, Inc.	Kaelus	Pulse Electronics	TPL Communications
Cooper B-Line	Kearney	Python Safety	Tractel
CPI Communications	Klein Tools	Radiowaves	Transtector Systems
Cradlepoint	KMW	Radio Frequency Systems, Inc.	Trilogy Communications, Inc.
Crescent Technologies	KTS Wireless	(RFS)	Tripp-Lite
The Crosby Group	Laird Technologies	Radwin	Trylon
Custom Cable	Lilee Systems	Railroad Products	Tuf-Tug Products
DB Spectra	Lindapter USA	Raycap	TWR Lighting, Inc.
DDB Unlimited	Louisville Ladder	RF Industries	Ubiquiti Networks
Dewalt	Mark Grid Antennas	Ritron Wireless Solutions	Westell
Dillon	Martor USA	Rockford Rigging	Wilson Electronics, LLC
DSG-Canusa	MECA	Rohn Products, LLC.	Zinga
DuraComm	Metal & Cable Corp., Inc.	Roxtec	ZRC
Elk River	Microlab	RSI	



101000010100100100100101001101010101011100111000101100001010011001010101010000111
00001010010011010010100110101011
110010010010010100011101001101000010011000101001000

PRIMUS

4180 E Sand Ridge Road | Morris, IL 60450
800-435-1636 tel | 800-767-7605 fax
support@primuselectronics.com | www.primuselectronics.com

©Primus 2017. All rights reserved. 1015RSS (1201) 03/17